

EVORICH[®]

evoFLUTE

Fluted Wall Panels

A sustainable product for
interior/exterior cladding



@evorichflooring

WWW.EVORICH.COM.SG

What is **evoFLUTE**



evoFLUTE is a modern, minimalistic wall panel with a stylish accent.

These timeless styles transform your spaces with their luxurious texture and astonishing detailing.

Features



**ECO
FRIENDLY**



**WATER
PROOF**



**TERMITE
FREE**



**MOLDING
FREE**



Easy to Maintain
Affordable Price!



Seamless

Installation

Our evoFLUTE are cut with desired precision and are cladded onto the wall with industrial standards adhesive.

(Panels may require screws for reinforcement.)

Care & Maintenance

It is almost hassle-free in cleaning; it requires light dusting with a dry cloth to quickly clean up any dust build-up.

Eco-Friendly

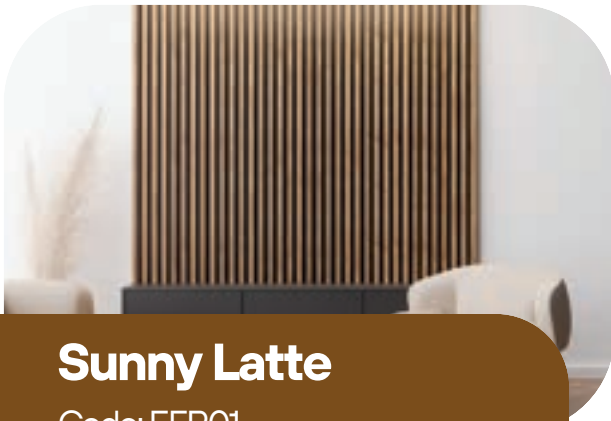
With the appearance and texture of natural wood, no forest and trees are harmed during the process of making evoFLUTE.

evoFLUTE

Available in
various colours!



evoFLUTE Outdoor Series



Sunny Latte

Code: EFP01

Thickness: 28 mm

Dimensions: 220mm x 2800mm

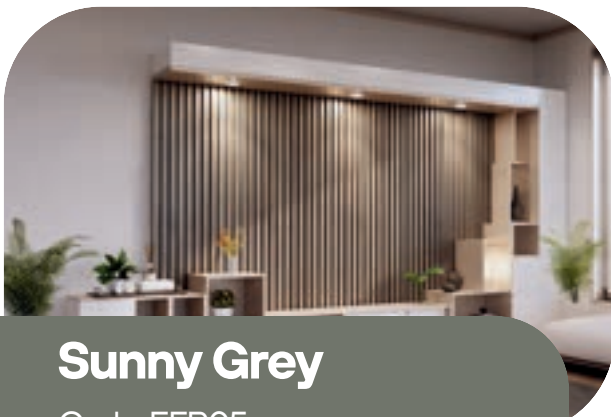


Sunny Americano

Code: EFP02

Thickness: 28 mm

Dimensions: 220mm x 2800mm

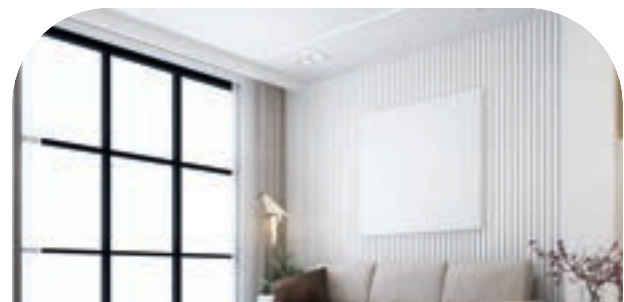
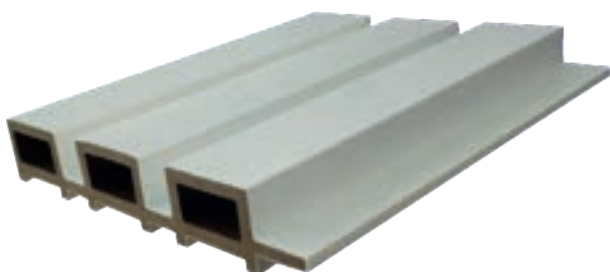
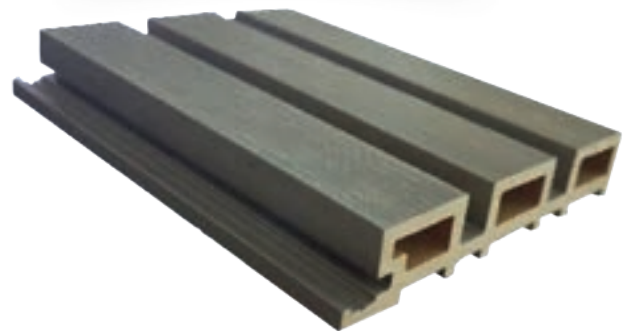


Sunny Grey

Code: EFP05

Thickness: 28 mm

Dimensions: 220mm x 2800mm



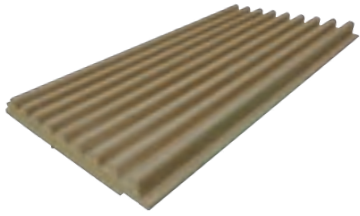
Sunny White

Code: EFP06

Thickness: 28 mm

Dimensions: 220mm x 2800mm

evoFLUTE Indoor Series



Small Contoured Oak

Code: EIRP116/M100

Thickness: 12mm

Dimensions: 2800mm x 99.59mm

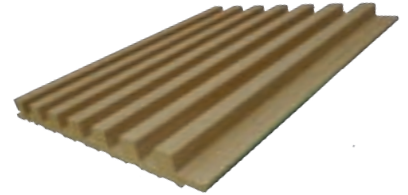


Big Contoured Oak

Code: EIRP116/CKS156

Thickness: 12.8mm

Dimensions: 2800mm x 156mm

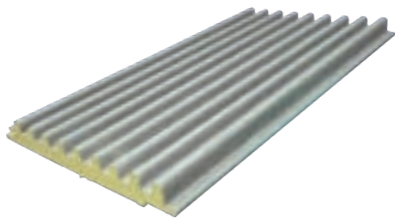


Squared Oak

Code: EIRP116/CKS140

Thickness: 13mm

Dimensions: 2800mm x 148mm

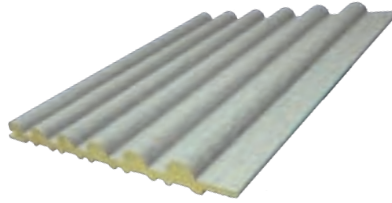


Small Contoured Grey

Code: EIRP108/M100

Thickness: 12mm

Dimensions: 2800mm x 99.59mm

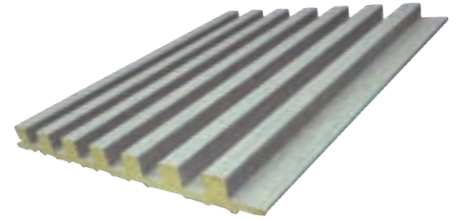


Big Contoured Grey

Code: EIRP108/CKS156

Thickness: 12.8mm

Dimensions: 2800mm x 156mm

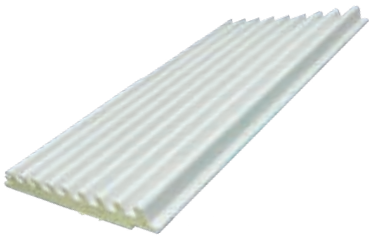


Squared Grey

Code: EIRP108/CKS140

Thickness: 13mm

Dimensions: 2800mm x 148mm



Small Contoured White

Code: PF995/M100

Thickness: 12mm

Dimensions: 2800mm x 99.59mm



White Wave

Code: K97S

Thickness: 7.8mm

Dimensions: 2800mm x 128mm



Beiged Wave

Code: K442

Thickness: 7.8mm

Dimensions: 2800mm x 128mm



Coffee Wave

Code: K443

Thickness: 7.8mm

Dimensions: 2800mm x 128mm



Cemented Wave

Code: K8869

Thickness: 7.8mm

Dimensions: 2800mm x 128mm

evoFLUTE Specifications

COMPOSITION

Dimension	220*26*2900mm
Weight	8.07kg Per Pc
Layer Part	100% Engineered Plastic
Core Part	35% Plastic, 55% Wood Fiber & 10% Additives

PHYSICAL PROPERTIES

Abrasion Resistance	9.3mg
Water Absorption	0.30%
UV1500h:	Δ E=1.3
Mildew Proof (ASTM)	0
Liner Thermal Expansion Coefficient (-20oC ~ 80oC)	$35.1 \times 10^{-6} 1/oC$
Rate of Elastic Recovery	72%











Test the Vinyl you breathe

EVORICH[®]

Since 2003 ...



☎ +65 6348 7333

✉ sales@evorich.com.sg

☎ +65 6342 9331

📱 @evorichflooring

WhatsApp us at

+65 8795 2118

www.evorich.com.sg

📍 **Evorich R&D Production • Experience Exhibit**
(Cheques Receiving Centre):

16 Tampines Street 92 Singapore 528873

📍 **EVORICH Concept Sales Gallery**
Floors • Decks • Walls • Ceilings:

1 Tampines North Drive 1 02-38 T-Space,
Evorich Block, Singapore 528559

📍 **EVORICH Curated Studios**
Floors • Decks • Walls • Ceilings:

10 Jln Kilang, Bukit Merah Enterprise Centre #02-02
(Entire Stretch of Level 2 facing the main road)
Singapore 159410