

# EVO HERF®

EVO HIGH END RESILIENT FLOORING



**EVORICH®**





## *About* **EVO HERF®**

Evo High End Resilient Flooring (Evo HERF®) is an eco-friendly vinyl flooring material created by EVORICH. It is a strong substitute to conventional laminate and parquet flooring due to its waterproof and termite-proof properties. Aesthetically appealing coupled with high performance ability makes Evo HERF a popular choice in Singapore and Asia Pacific Regions.



## *What is* **Evo High End Resilient Floor?**

**Evo High End Resilient Flooring** (Evo HERF) is pure virgin vinyl flooring which has gained popularity especially over the years eco-conscious consumers. Best suited flooring for residential and commercial establishments like schools, restaurants and hotels. It has multiple environmental health and benefits compared to conventional vinyl flooring.

# EVO HERF® *Benefits*



## High Scratch Resistance

Highly scratch resistant - homeowners do not need to worry about furniture shifting or their pets scratching the floor.



## High Slip Resistance

Evo HERF is suitable and safe for children and elderly at home because it has high slip resistance which also reduces risk of accidents.



## Cost-Saving

Being easy to maintain and being recyclable, Evo HERF is cost-efficient flooring option.



## Recyclable/Transferrable

Evo HERF can easily be transferred to a new location in case homeowners need to change address.



## Termite Proof

Evo HERF looks like wood and feels like wood but with absolutely NO wood content.



## Easy to Clean and Maintain

Evo HERF can be cleaned and maintained with a simple sweep & mop, saving you time and maintenance cost.



## Easy to Install

Evo HERF does not require glue and can be overlaid on existing floor using CLIC Locking System without any hacking required.



## 100% Waterproof

Evo HERF is suitable for frequently high moisture areas such as kitchen, dining and living areas.

# Singapore *Media*



## STYLE: LIVING MAGAZINE

September 2013 issue; Evorich Flooring (Evo HERF) was featured easy maintenance flooring



## SQUARE ROOMS MAGAZINE

Aug 2011, Nov 2011, Feb 2012, May 2012, Nov 2012 & May 2013 issue; Evorich Flooring (Evo HERF) was featured as eco friendly flooring & also the annual issue of Ideal Home 2014.



## HOME & DECOR MAGAZINE

October 2013 issue; Evorich Flooring (Evo HERF) was featured on pet friendly flooring.



## IDEAL HOME

Vol. 6 on Evo HERF



## LOOKBOX LIVING

Lookbox Living #23 Issue on Decking editorial #27 issue on Evo HERF.



## PETS MAGAZINE

Nov 12, Feb 13 and Apr 13 issue; Evorich Flooring was featured on giving advice on pet friendly flooring.

# TV Shows Floored with **Evo HERF**<sup>®</sup>



Mediacorp Channel 8:  
**PEACE & PROSPERITY**  
(CHINESE: 富贵平安)



Mediacorp Channel 8:  
**PLEASE BE MY GUEST**



Mediacorp Channel 5:  
**TANGLIN**

## *Residential*

**Evo High End Resilient Flooring** is a new type of flooring recently introduced into the flooring Singapore market; it is an improved version of flooring to laminate, wooden flooring.

It is also known as “waterproof laminate flooring” by some interior designers and contractors in Singapore. It stands as a strong substitute to conventional laminate and parquet flooring due to its absolute waterproof and termite-free properties. True to its name, Evo HERF makes a standard room interior looks high-end with its easy installation process and a variety of 12 design choices.



**Evo HERF in  
Amsterdam Light Tan**



**Evo HERF in  
Hazelnut**



**Evo HERF in  
Pearl Oak**



**Evo HERF in  
Kentucky Oak**



**Evo HERF in  
Markham Oak Medium**



**Amsterdam Eggshell**  
at Yishun Riverwalk



- ✓ Eco-Friendly
- ✓ Highly Scratch Resistant
- ✓ 100% Waterproof
- ✓ Lifetime Warranty



A strong feature about Evo High End Resilient Flooring is that it can be reused over and over again. Say you installed it in your home, after 5 years, you want to move house; and in fact, you can actually “bring” your existing high end flooring along to your new home. What it means to you, that the investment on high end resilient flooring is worthwhile as it can be recycled and therefore save you tons of money in the long run.

Evo High End Resilient Flooring comes with a **15-year light commercial** and **lifetime residential limited warranty**. Installation is very easy as you require no underlay or expertise doing it. All you need is a ruler and pen knife to do the installation.



MARKHAM OAK LIGHT



AMSTERDAM LIGHT TAN



SCANDIC SNOW WASH



ASPEN OAK BLACK

**Evo HERF<sup>®</sup>**  
*for Kitchen*



Markham Oak Medium



# Evo HERF<sup>®</sup> *for Living Room*



MARKHAM OAK MEDIUM



ASPEN OAK BLACK



AMSTERDAM LIGHT TAN



PEARL OAK

# Evo HERF<sup>®</sup> *for Bedroom*



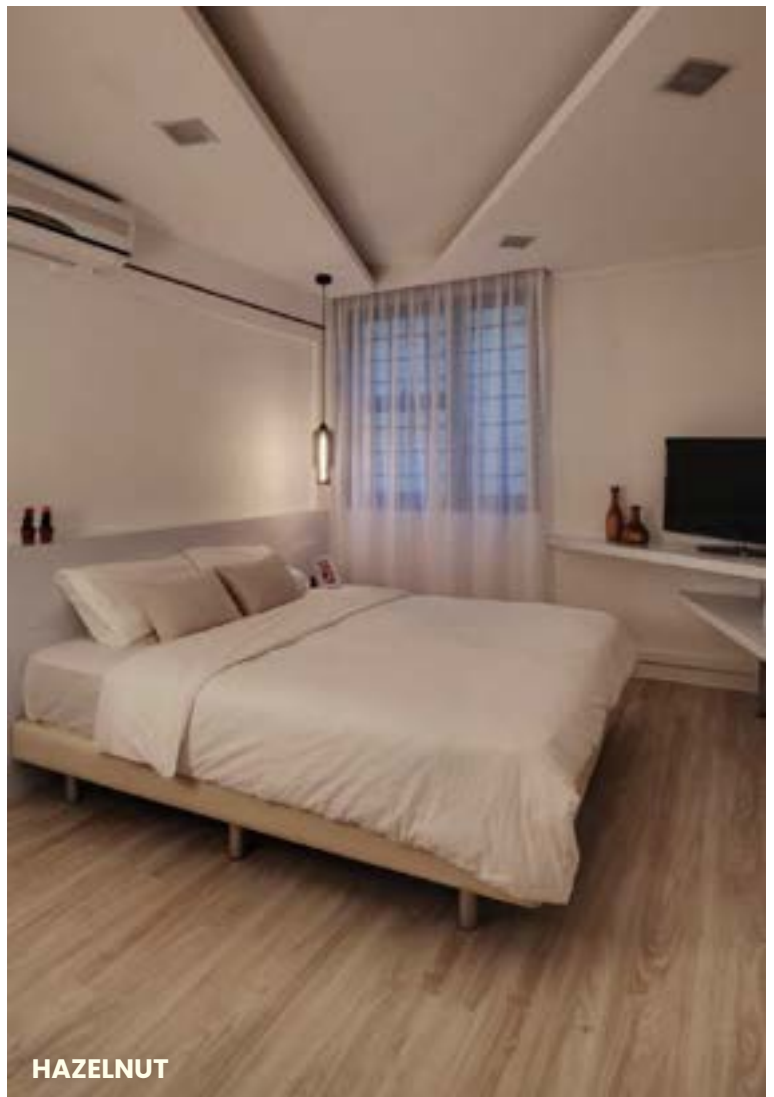
AMSTERDAM LIGHT TAN



AMSTERDAM EGGSHELL

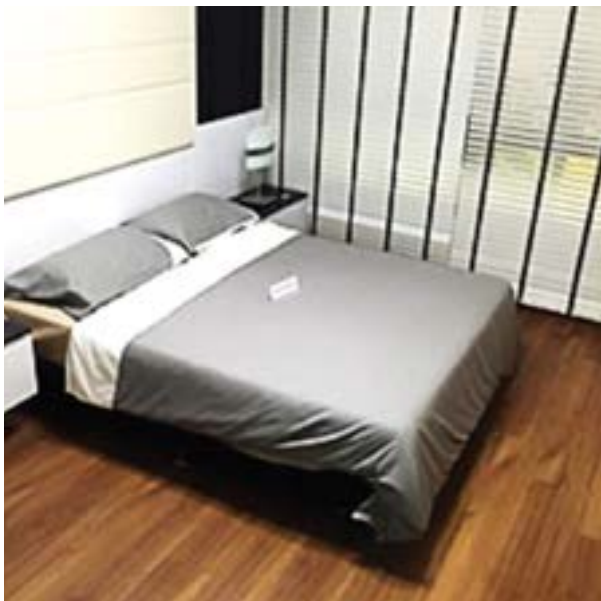


MARKHAM OAK LIGHT



HAZELNUT







**HOUSING &  
DEVELOPMENT  
BOARD**

# EVORICH Projects



**Markham Oak Medium**

**St George Tower  
Kallang Whampoa**



**Markham Oak Medium**

**Kampung Admiralty**



**Markham Oak Light**

**East Creek Canberra  
@ Sembawang**



**Markham Oak Medium**

**Senja Heights**



**Markham Oak Light**

**Senja Ridges**



**Markham Oak Medium**

**Senja Valley**



**Markham Oak Medium**

**Woodlands Spring**



**Hazel Grove**

**Blk 64 to 66 Commonwealth  
Drive, SERS Project**



**Greenwich Tan**

**Tengah Plantation C4**



**Greenwich Tan**

**Punggol Northshore Edge**



**Hazel Grove**

**Tampines GreenJade**



**Pearl Oak**

**Woodland,  
Champions Green**



Building and Construction Authority  
Registered Contractor



FLA Awards 2015  
RESIDENTIAL TRANSACTIONS  
OF THE YEAR



# Evo High End Resilient Flooring

## *Project References*

**Project:** PCF Kindergartens and Childcare Centres in Singapore

**Flooring:** Evo HERF Area: More than 4650 sqm

**Status:** Completed 11 units to date

- 98 Joo Chiat Road #02-01 / 02-02 Singapore 427633
- 405 Joo Chiat Road Singapore 427633
- Punggol Community Centre #02-04
- 31 Balam Road Singapore 370031
- 104 Pemimpin Place, Coral Park Singapore 576101
- Blk 233 Simei St., #01-148 Singapore 520233
- Blk 545 Bedok North Street 3 Singapore 460545
- 125 Serangoon North Ave 1 Singapore 550125
- Blk 216 Pasir Ris Street 21 Singapore 510216
- Blk 465 Jurong West Street 41 Singapore 640465
- Blk 823 Jurong West, #B1-462 Singapore 640823

## *Nurseries, Schools and Childcare Centres*



Evo High End Resilient Flooring is **recommended** for nurseries, kindergartens, playrooms, schools and childcares because the product is certified to have very low in formaldehyde emission (E1 EN standard); required no glue during installation; very easy to clean and maintain due to its 100% waterproof feature.



**MARKHAM OAK MEDIUM  
PLAYNATION. SCAPE BRANCH**



**CHILDCARE CENTRE,  
ONE PEMINPIN**



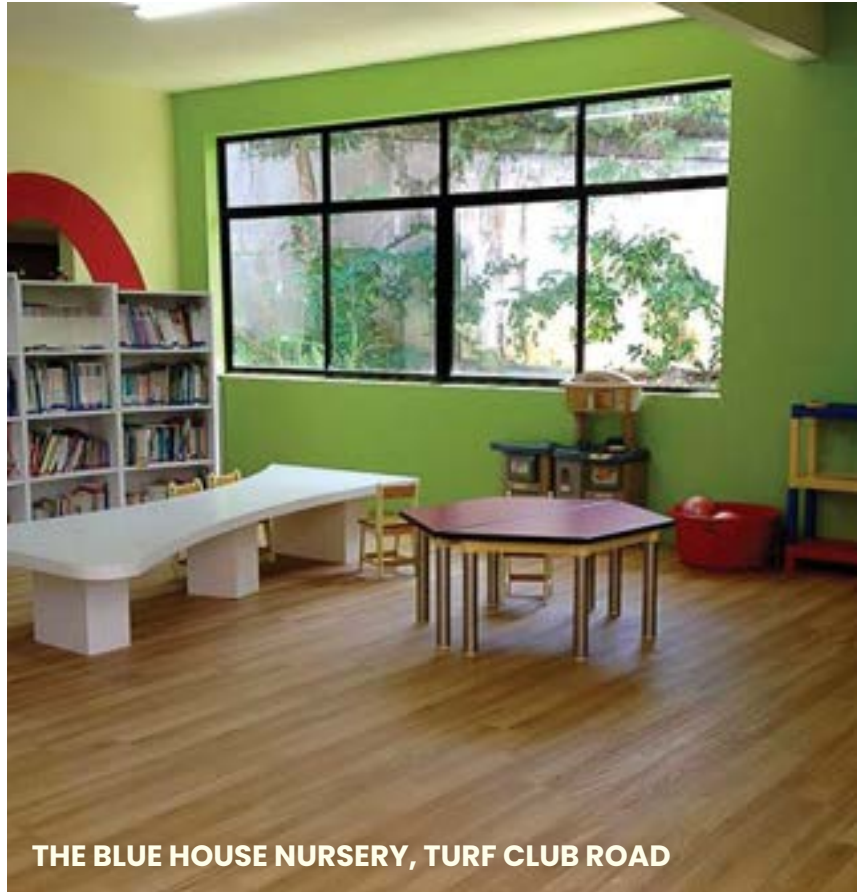
**HEGURU EDUCATION CENTRE**



**11 PCF CENTRES IN SINGAPORE**



MY GYM, WEST GATE



THE BLUE HOUSE NURSERY, TURF CLUB ROAD



THE BLUE HOUSE NURSERY, TURF CLUB ROAD

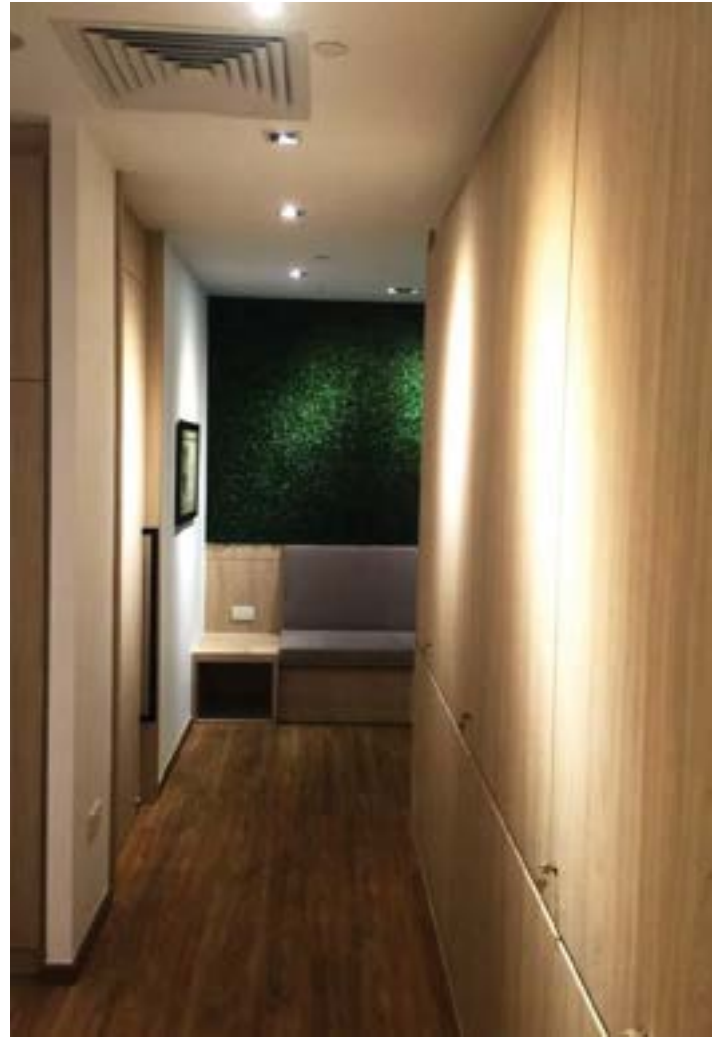


**Amsterdam Eggshell**  
at Mount Elizabeth Novena Specialist Centre

38 Irrawaddy Road #10 - 30 Mount Elizabeth  
Novena Specialist Centre Singapore 329563

# Hospitals and Clinics

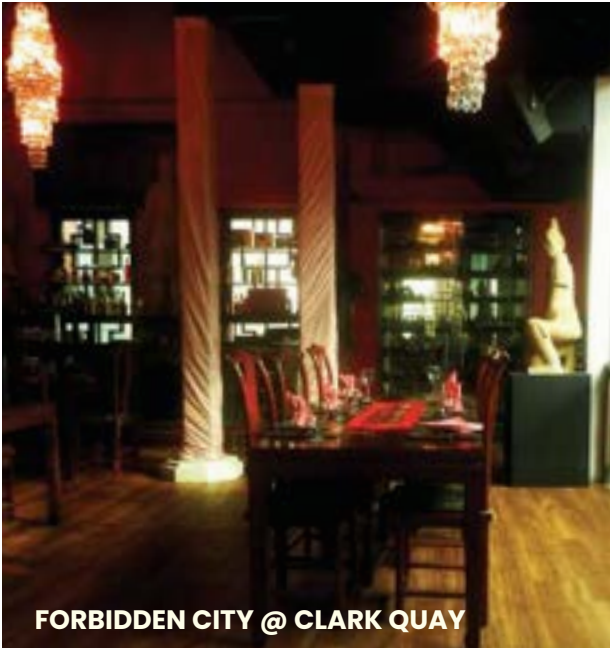






**Hazelnut**

at SOG – SC Hong  
Clinic for Women | Mount Alverina Hospital  
820 Thomson Road #07-62 Mount Alvernia Medical Centre  
Singapore 674623



FORBIDDEN CITY @ CLARK QUAY

## *Restaurants, Cafes, Lounge and Wine Bars*

The 100% waterproof feature for Evo High End Resilient Flooring (Evo HERF) makes it one of the popular flooring options for restaurants, cafes, lounges and wine bars.

Restaurateurs can enjoy the luxury of wood or marble-like flooring and thereby giving the guest experience, that feeling of exquisiteness.



NEKO NO NIWA CAT CAFE



XING HUA LOU



**MIYABI JAPANESE RESTAURANT**



**IBAKE PRIMA DELI**



**COVELLI**



**THE PELICAN, ONE FULLERTON**



## *Gym, Studios and Sports Recreation Areas*

Evo High End Resilient Flooring, being 100% waterproof and stain resistant is very suitable for gyms, studios and sports recreation areas as sweat stains and smell can be very much minimized.

Evo HERF has good impact resistance and slip resistance which enhances safety as well.



FITNESS ONE GYM @ KL



PILATIQUE PILATES STUDIO (SINGAPORE)



ST FRANCIS METHODIST SCHOOL  
Sports Recreation Hall



HAMILTON SCOTTS GYM

# *Dance Studio*





**Markham Oak Light**  
Shawn & Gladys Dance Academy



**Durban Oak**  
Pasir Ris Public Library



## *Pasir Ris Public Library*

This area - reading terrace with windows overlooking Pasir Ris Park meant to provide readers with a serene space reminiscent of reading by the park. Evorich's Evo HERF - Durban Oak Design adds an exciting and inviting ambience to a comfortable and relaxing space for every reader.

*Photo credits to Channelnewsasia.com*





# *Hotels and Other Commercial Projects*





**Amsterdam Eggshell**  
at Festive Hotel, Sentosa Island





## *Evo HERF<sup>®</sup> as Pet-Friendly Flooring*

Designed for families with pets and active lifestyle, High End Resilient Flooring (Evo HERF) is an ideal flooring for pet-lover homeowners. Whether you share your home with a cat, a dog or any combination of furry, feathered or scaled friends, it's necessary to have the best pet-friendly flooring. Evo HERF solves problems common to pet-owning households. Most pet-lover homeowners faces the same issues in creating a home environment that is suitable for pets and people alike. Factors to consider in choosing the right flooring for their pets are: water proof (or at least moisture resistant), scratch and abrasion resistant, low in maintenance, odor-free and easy to clean.



**FIRSTLOOK ASIA**  
 BREAKFAST SHOW MONDAY - FRIDAY 8.00 - 9.00 AM SGT/MSK

PROPERTY & TECH HEALTH & HOOD CARS & MOVIES GOES MORE THE 10

**Pet Friendly Homes**

**Darren Ong**  
 Herbs, Concessions, Sales  
 Everich Flooring Central

**Pet Friendly Homes**  
 Doing what we can to make your home comfortable for your furbaby. In this edition of Herb, we meet a couple who's spent money, time and energy into making their home pet friendly.

*Photo credits to Channelnewsasia.com*

HERF by EVORICH was featured in Channel NewsAsia as Asia's **leading multinational floor** for pet lovers' homes.



**Neko Ko Niwa Cat Café, Boat Quay**  
 The first Cat Café in Singapore



**Evo HERF in Natural Hickory**  
Dog Day Care & Grooming Centre  
Ginny & Friends - Where Dogs Play All Day  
<http://www.ginnydogcare.com/>

# What Makes **Evo HERF®** So Unique & Extraordinary?



## Overlaying Installation System

Install HERF directly over most hard surfaces—tiles, timber, concrete, or existing vinyl. No underlay needed.



## Warranty

Enjoy peace of mind with a Lifetime Residential Limited Warranty and 15-year Light Commercial Warranty.



## Slip Resistance

Certified to SS485 standards, HERF's embossed surface enhances grip and minimizes slip-related accidents.



## 100% Waterproof

EVORICH Flooring's High-End Resilient Floor (HERF) is made from top-quality pure virgin vinyl resin.



## Fire-Resistant

Certified Bfl-S1 for BS EN13501 Standard for flammability and EN ISO 9239-1 Standard in determination of the initial type testing of fire behaviour.



## Commercial Grade Wear Layer

Having a thick, high commercial-grade wear layer, HERF becomes more durable and may be used in both residential and commercial spaces.



## CLIC Locking System

EVORICH Flooring's High End Resilient Floor (HERF) has a unique CLIC system for simple, glue-less installation.



## Air Emission Performance

Evo HERF has undergone a test on TVOC and formaldehyde emission based on ASTM 5116-10 standard.



## Termite-Free

EVORICH Flooring's High End Resilient Floor (HERF) does not breed any dusty mites, termites or any wood worms.

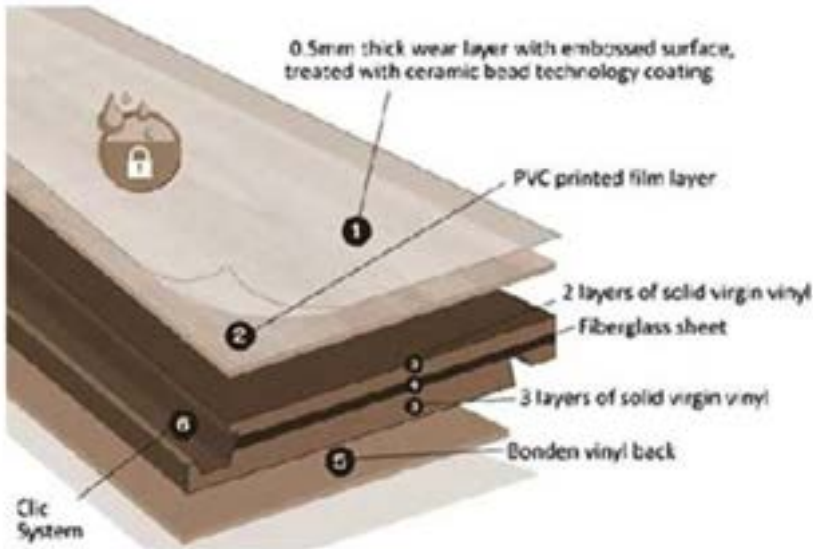


## Environmentally Friendly

EVORICH Flooring's High End Resilient Floor (HERF) is a certified green product by the Singapore Green Building Council.



# Products Specifications, Structure and Installations



## EMBOSS SURFACES



- Do-It-Yourself (DIY) concept flooring,
- Underlay not required
- Glue-less and no messy installation
- Cut with utility knife, no heavy tools required
- You can use it immediately after installation
- Minimal wastage on installation



**1**  
Position the 2 planks



**2**  
Angle the second plank and align the interlocking strips



**3**  
Press down and lock into place

# Evo High End Resilient Flooring Test Reports

S/N	PERFORMANCE / PROPERTIES	TEST METHODS	RESULTS
<b>A. Dimensions and Dimension Tolerance</b>			
1	The side length	ISO 24342 or EN 427	Pass
2	Tile square-ness	ISO 24342 or EN 427	Pass
3	Overall thickness	ISO 24346 or EN 428	Pass
4	Thickness of wear layer	ISO 24340 or EN 429	Pass
5	Total mass per unit area	ISO 23997 or EN 430	Pass
<b>B. Physical Properties</b>			
1	Dimensional stability after exposure to heat	ISO 23999 or EN 434	Pass
2	Curling after exposure to heat	ISO 23999 or EN 434	Pass
3	Residual indentation	ISO 24343-1 Part 1	0.05 mm
4	Effect of castor chair	ISO 4918	Pass
5	Abrasion resistance	EN 660 Part 2	Wear Group T
6	Slip resistance	SS 485 (Dry floor friction test)	Class F
		SS485 (Wet condition-pendulum friction test)	Class X
<b>C. Chemical Properties</b>			
1	Color fastness to artificial light	ISO 105-B02	Grade 6
2	Stain & Chemical resistance	ISO 26987	Class 0 ; No change
<b>D. Fire Performance</b>			
1	Toxicity	BS EN 45545-2 and EN ISO 5659-2	Achieve CIT < 0.75
2	Smoke Production	EN 13501-1 / EN 9239-1	Achieve S1
3	Flame spread/ ignition	EN 13501-1 / EN 11925-2	Achieve B fl
4	Cigarette burn resistance	EN 1399	Class 4
<b>E. Air Emission Quality</b>			
1	Air Emission Performance	ASTM D5116-10	Not detected

# Comparison between Evo HERF and Other Common Types of Flooring

	Evo High End Resilient Flooring (Evo HERF)	Laminate Flooring	Teak Parquet	Ceramic tiles, Granite, Marble & Homogenous tiles	Conventional Vinyl
Easy Maintenance	✓	✓		✓	
Safety & Care	✓	✓	✓		
Colour Choice	✓	✓		✓	✓
Easy Installation & Replacement	✓	✓			
Overlaying Installation System (Hacking of current flooring not required)	✓	✓			
Firm Feel When Stepped On	✓		✓	✓	✓
Highly Scratch Resistance & Highly Durable	✓	✓		✓	
High Skid Resistance	✓		✓		✓
Manufacturer's Warranty	✓	✓			
Waterproof	✓			✓	✓

**TEST REPORT: 7191146830-CHM16-MA-CR1**

Date: 19 SEP 2016 Tel: +65 68851312 Fax: +65 67784301

Client's Ref: Email: zhou.xiao@tuv-sud-psb.sg

Note: This report is issued subject to the Testing and Certification Regulations of the TÜV SÜD Group and the General Terms and Conditions of Business of TÜV SÜD PSB Pte Ltd. In addition, this report is governed by the terms set out within this report.



PSB Singapore

Choose certainty.  
Add value.

**SUBJECT**

Evaluation of Vinyl Product Samples comply with Singapore Green Building Council (SGBC)

**CLIENT**

Evorich Holdings Pte Ltd  
21 Kim Chuan Terrace  
Singapore 537042

Attn: Mr Raymond Foo

**DESCRIPTION OF SAMPLE**

Four sets of samples labelled as follow were received on 29 Aug 2016:

Sample Description : Evo HERF (High End Resilient Floors)

**DATE OF ANALYSIS**

07 Sep 2016 – 15 Sep 2016



Laboratory:  
TÜV SÜD PSB Pte. Ltd.  
No.1 Science Park Drive  
Singapore 118221

Phone : +65 6885 1333  
Fax : +65 6775 8678  
E-mail: enquiries@tuv-sud-psb.sg  
www.tuv-sud-psb.sg  
Co. Reg : 199002697R

Regional Head Office:  
TÜV SÜD Asia Pacific Pte. Ltd.  
1 Science Park Drive, #02-01  
Singapore 118221  
TUV

**METHOD OF TEST**

**1. Emission Test**

The following emission tests were conducted according to ASTM D5116-10 – *Standard Guide for Small-Scale Environmental Chamber Determinations of Organic Emissions From Indoor Materials / Products*, as reference.

- 1) Total Volatile Organic Compounds (TVOC) Emission
- 2) Formaldehyde Emission

**Emission Test Condition**

- 1) Chamber Volume: about 1m<sup>3</sup>
- 2) Temperature: 23°C
- 3) Relative Humidity: 50%
- 4) Air Exchange Rate: n=1 (air change rate per hour in the chamber)
- 5) Chamber Loading Ratio: 0.4-1.0 m<sup>2</sup>/m<sup>3</sup> (total exposed surface area of the test specimen divided by the net air volume of the emission test chamber)
- 6) Air Velocity: 0.1 m/s to 0.3 m/s (over the surface of the test specimen)

**Characteristics of the Test Chamber**

- 1) 1 m<sup>3</sup> chamber meeting the requirements of ISO 16000-9 / ASTM D5116
- 2) Chamber Loading ratio for the tested sample: 0.41 m<sup>2</sup>/m<sup>3</sup>
- 3) Area specific air flow rate 2.4 m<sup>3</sup>/m<sup>2</sup>/h

Air samples were taken on the seventh day and duplicated.

- 1) For analysis, the air was sampled using constant flow rate pumps, equipped with absorbent containing Tenax to trap VOCs. (sampling and assay carried out according to ISO 16000-6 / ASTM D5116).
- 2) In addition, the air was sampled using constant flow rate pumps, provided with absorbent containing di-nitrophenylhydrazine (DNPH) grafted silica cartridge to trap aldehydes. (sampling and assay performed according to ISO 16000-3)
- 3) The Tenax samples were then desorbed by Automated Thermal Desorber System and then analyzed by Gas Chromatography coupled with Mass Spectrometry (ATD-GCMS).
- 4) The samples on DNPH cartridge were then desorbed to form the stable compound hydrazone, which was then assayed by Liquid Chromatography (HPLC) with UV / Diode Array Detector.

**Calculation of Emission Concentration**

For Singapore Green Building Product (SGBP) Certification, product emissions are required to meet the following exposure concentrations within 168 hours of testing.

Test	Condition(s) to be achieved for SGBP Rating			
	1 Tick	2 Ticks	3 Ticks	4 Ticks
TVOC Emission	≤ 1.0 mg/m <sup>3</sup>	≤ 0.5 mg/m <sup>3</sup>	≤ 0.25 mg/m <sup>3</sup>	≤ 0.1 mg/m <sup>3</sup>
Formaldehyde Emission	≤ 0.1 mg/m <sup>3</sup>	≤ 0.05 mg/m <sup>3</sup>	≤ 0.025 mg/m <sup>3</sup>	≤ 0.01 mg/m <sup>3</sup>

**METHOD OF TEST** (Cont'd)

**Emission Concentration Determinations**

**Emission Factor Calculations**

$$EF = C \times (NL)$$

- EF = emission factor (mg/m<sup>2</sup> hr) or (mg/unit hr)  
C = chamber concentration (mg/m<sup>3</sup>)  
N = chamber air exchange rate (hr<sup>-1</sup>)  
L = product loading (m<sup>2</sup>/m<sup>3</sup>)

- 1) Chromatographic analyses lead to determine experimental concentrations of compounds (C) at the end of the test (in mg/m<sup>3</sup>)
- 2) Area specific emission rates of the compounds (EF) are obtained by multiplying the experimental concentrations by the actual area specific air flow rate (NL) in the chamber (in mg/m<sup>2</sup>/h)

The model measurements were made with the following assumptions: air within open office areas of the building is well-mixed at the breathing level zone of the occupied space, environmental conditions are maintained at 50 % relative humidity and 23°C; there are no additional sources of these pollutants; and there are no sinks or potential re-emitting sources within the space for these pollutants.

The constant emission factor (as determined at 165 hour) is used to determine compliance with the SGBP Criteria by calculating an exposure concentration. The predicted exposure concentrations (C<sub>P,t</sub>) (mg/m<sup>3</sup>) are calculated from the modelled emission factors as:

$$C_{P,t} = EF_{m,t} \left( \frac{A}{V} \right) \left( \frac{1}{N} \right)$$

where,

- C<sub>P,t</sub> = predicted exposure concentration at time t (mg/m<sup>3</sup>)  
EF<sub>m,t</sub> = modelled emission factor at time t (mg/m<sup>2</sup> hr) or (mg/unit hr)  
A = product area exposed in room (m<sup>2</sup> or unit)  
V = room volume (m<sup>3</sup>)  
N = room air change per hour (hr<sup>-1</sup>)

The model was set as Private office scenario in a 30.6 m<sup>3</sup> room (V) with 0.68 air change (N) rate defined in Table 4-4 and Table 4-5 with reference to California Department of Public Health (CDPH) *Standard Method for the Testing and Evaluation of Volatile Organic Chemical Emissions from Indoor Sources Using Environmental Chambers V 1.1* (2010).

**RESULTS**

**1. Emission Test Results**

**Table 1. Total Volatile Organic Compounds (TVOC) Emission Concentration Test Result**

Sample	Test Result (After 168 hours)		Criteria for Singapore Green Building Council	Inferred Result
	Emission Rate	Concentration**		
Evo HERF (High End Resilient Floors)	0.14 mg/m <sup>3</sup> /h	0.07 mg/m <sup>3</sup>	≤ 0.1 mg/m <sup>3</sup> (4 Ticks)	Pass

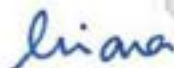
\* TVOC is the sum of volatile organic compounds sampled on the sorbent tube between n-hexane (C6) and n-hexadecane (C16), and quantified by converting the total area of the chromatogram in that region to Toluene concentration equivalent.

\*\* Predicted exposure concentration based on usage area of 11.1 m<sup>2</sup> (A) for flooring/ceiling application.

**Table 2. Formaldehyde Emission Concentration Test Result**

Sample	Test Result (After 168 hours)		Criteria for Singapore Green Building Council	Inferred Result
	Emission Rate	Concentration**		
Evo HERF (High End Resilient Floors)	< 0.01 mg/m <sup>3</sup> /h	< 0.01 mg/m <sup>3</sup>	≤ 0.01 mg/m <sup>3</sup> (4 Ticks)	Pass

\*\* Predicted exposure concentration based on usage area of 11.1 m<sup>2</sup> (A) for flooring/ceiling application.



MS MARIANA AHMAD  
CHEMIST



DR XIAO ZHOU  
PRODUCT MANAGER  
MICROCONTAMINATION DIAGNOSIS  
CHEMICAL & MATERIALS

## TEST REPORT: 7191092331-CHM14-TSL-CR1

Date: 18 JUL 2014

Tel: +65 68851312 Fax: +65 67784301

Client's Ref:

Email: zhou.xiao@tuv-sud-psb.sg

Note: This report is issued subject to the Testing and Certification Regulations of the TÜV SÜD Group and the General Terms and Conditions of Business of TÜV SÜD PSB Pte Ltd. In addition, this report is governed by the terms set out within this report.



PSB Singapore

Choose certainty.  
Add value.

### SUBJECT

Evaluation of Toxic Fumes Generated From Material Sample During Burning

### CLIENT

Evorich Holdings Pte Ltd  
21 Kim Chuan Terrace  
Singapore 537042

Attn : Mr Raymond Foo

### SAMPLE SUBMISSION DATE

04 Jul 2014

### DESCRIPTION OF SAMPLE

A piece of material sample labelled as follows was received.

Sample Information		Figure of Sample
Brand & Model Reference :	(HERF) High End Resilient Floor	
Generic Product Name :	Click Vinyl Plank	
Nominal Thickness :	5.0 mm	
Density :	1947 kg/m <sup>3</sup>	

### DATE OF ANALYSIS

07 Jul 2014 – 18 Jul 2014

### Amendments:

The following amendment was made on 18 Sep 2014:

The Sample Information under "DESCRIPTION OF SAMPLE" and "RESULTS" were amended as requested.



TEST REPORT: 7191092331-CHM14-TSL-CR1  
18 JUL 2014



PSB Singapore

**RESULTS**

**Table 1: The Toxic Fumes Results For "Click Vinyl Plank" Sample**

Toxic Fumes Generated	"Click Vinyl Plank" (mg/m <sup>3</sup> of Fire Effluents)	IDLH Values Limits <sup>a</sup> (mg/m <sup>3</sup> )
1. Carbon Dioxide, Average (Carbon Dioxide, maximum)	697 1073	73000 -
2. Carbon Monoxide, Average (Carbon Monoxide, maximum)	<200 <200	1400 -
3. Hydrogen Fluoride, HF	<5	25
4. Hydrogen Chloride, HCl	<5	76
5. Hydrogen Bromide, HBr	<5	101
6. Sulfur Dioxide, SO <sub>2</sub> <sup>b</sup>	<5	270
7. Nitrogen Dioxide, NO <sub>2</sub> <sup>c</sup>	<5	38
8. Hydrogen Cyanide, HCN	<5	56

<sup>a</sup> The values in Table 1 are the IDLH values of the listed gases (the concentration of the gas in the atmosphere which for an exposure time of 30mins is immediately Dangerous to Life or Health) given in the NIOSH Guide [1].

<sup>b</sup> Sulfur Dioxide includes Sulfur trioxide expressed as sulfur dioxide

<sup>c</sup> Nitrogen dioxide includes nitric oxide expressed as nitrogen dioxide

1. The above results from the analysis of the toxic fumes generated from the specimen were found to be below the IDLH Value of listed gases.
2. The weighted summation index, R, is less than 0.3.

**Remarks**

The weighted summation index R for the sample tested was found to be within the requirement of 1.0 max when tested and assessed according to NF X 70-100 with R calculated in accordance with Annex B of BS 6853:1999.

MS TAN SER LING  
TECHNICAL EXECUTIVE

DR XIAO ZHOU  
PRODUCT MANAGER  
MICROCONTAMINATION DIAGNOSIS  
CHEMICAL & MATERIALS



# SINGAPORE GREEN BUILDING PRODUCT CERTIFICATE

AWARDED TO

**Evorich Holdings Pte Ltd**

16 Tampines Street 92 (Behind Tampines SAFRA)  
Singapore 528873

FOR THE PRODUCT

**Floor Finishes - Vinyl (Heterogeneous)**

PRODUCT BRAND

**EVORICH**

PRODUCT MODEL

**Evo HERF (Aspen Oak Black, Kentucky Oak, Natural Hickory, Greenwich Tan, Markham Oak Light, Markham Oak Medium, Durban Oak, Pearl Oak, Amsterdam Eggshell, Amsterdam Silver, Amsterdam Light Tan, Glacial Pine, Hazel Grove, Scandic Snow Wash)**

THE PRODUCT HAS BEEN ASSESSED ACCORDING TO THE ASSESSMENT CRITERIA OF SINGAPORE GREEN BUILDING PRODUCT CERTIFICATION SCHEME. IT HAS BEEN AWARDED THE RATING:

CEO  
SGBC Pte Ltd




Certificate Number	Original Issue Date	Revised Date	Valid Till
SGBP 3748	28 March 2025	-	27 March 2027

✓Good    ✓✓Very Good    ✓✓✓Excellent    ✓✓✓✓Leader

The use and reliance on this certificate is subject to the terms and conditions of the Singapore Green Building Product Certification Scheme. Revised certificates may also be issued at the discretion of the Council. The certification status may be verified at the Singapore Green Building Council website ([www.sgbc.sg](http://www.sgbc.sg)).


# The Basic Certificates for Evo High End Resilient Flooring (Evo HERF®)

Evo High End Resilient Flooring **Evo HERF**™ EVORICH




## Test Results Against 4 Chemicals

**01** **Total Volatile Organic Compounds (TVOC) Emission**




Test Result (After 168 hours): **0.16 per sqm per hour**  
Criteria for Singapore Singapore Green Building Council: **0.25 mg per sqm per hour or less**  
**Result: PASS**

**02** **Formaldehyde Emission**




Test Result (After 168 hours): **< 0.01 mg per sqm per hour**  
Criteria for Singapore Singapore Green Building Council: **0.02 mg per sqm per hour or less**  
**Result: PASS**

**03** **Phenylcyclohexene Emission**



Test Result (After 168 hours): **< 0.002 mg/sqm per hour**  
Criteria for Singapore Singapore Green Building Council: **0.0065 mg per sqm per hour or less**  
**Result: PASS**

**04** **Total Phthalates Emission**



Test Result (After 168 hours): **< 0.005 mg per cum per hour**  
Criteria for Singapore Singapore Green Building Council: **<0.01 mg per cubic metre**  
**Result: PASS**

[www.evorich.com.sg](http://www.evorich.com.sg)

# Evorich Evo High End Resilient Flooring (Evo HERF®) Collection

## *Wide Plank Series™*



35313  
Scandic Snow Wash



63696  
Durban Oak



66314  
Natural Hickory



72513  
Markham Oak Medium



72516  
Kentucky Oak



546128  
Aspen Oak Black



72510  
Markham Oak Light



978103  
Amsterdam Light Tan



978104  
Amsterdam Eggshell



978109  
Amsterdam Silver



01993  
Glacial Pine



ORGW-111-2  
Pearl Oak



ORGW-111-4  
Greenwich Tan



ORGW-111-17  
Hazel Grove



M11110  
Champagne Oak



M11118  
Stonewashed Timber



M11122  
Frosted Oak

Dimension: 190mm x 1210mm  
Thickness: 5.0mm  
Wear Layer: 0.5mm

# DID YOU KNOW?



EVORICH is the first flooring company to introduce High End Resilient Flooring (HERF)<sup>®</sup> into the Singapore market.

High End Resilient Flooring (HERF)<sup>®</sup> was named by EVORICH because of its high-end quality features compared to traditional vinyl and laminated floors.

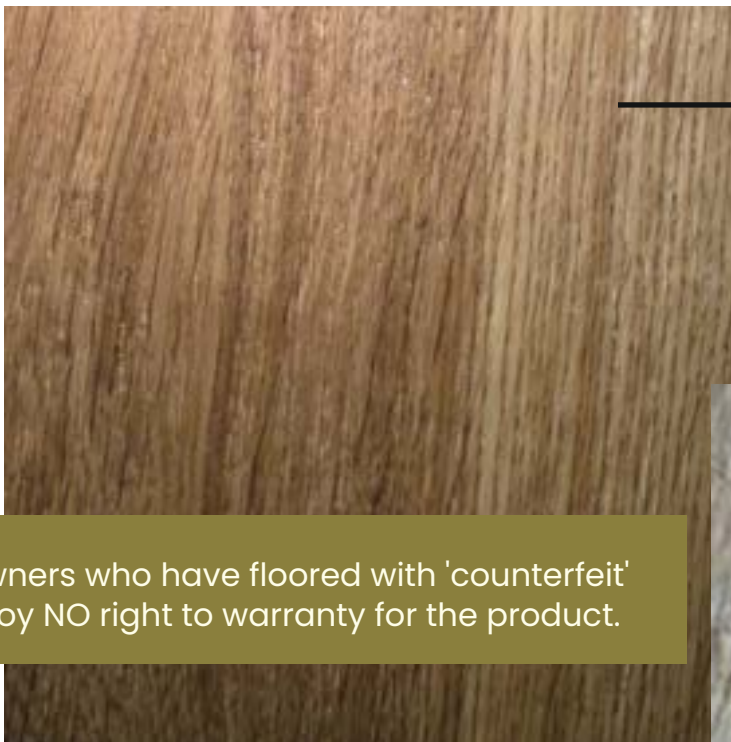
## EVORICH FACTS

To ensure a Lifetime Residential Limited Warranty for your HERF, it must be verified that your HERF was installed by certified installers bearing the Flooring Company's Work Permit.

EVORICH Manufacturing Pte Ltd is the only flooring company that is **CaseTrust Accredited**. This reflects our commitment towards fair-trading by establishing consumer-friendly policies, ethical advertising, and proper dispute resolution procedures.

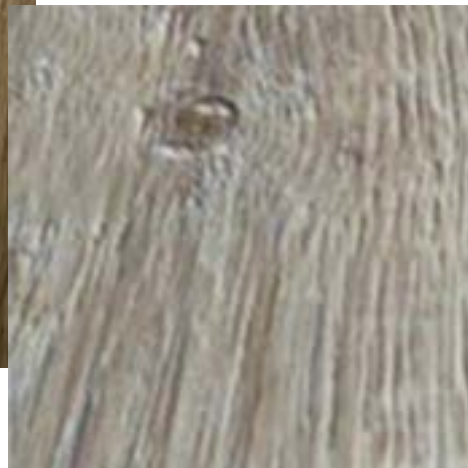
# How to spot an *authentic* HERF®?

ONLY authentic High End Resilient Flooring (HERF®) has the Ceramic Bead Technology with the “shimmering” dots coatings for enhanced wear & resistance and improved durability.



Spot the shimmering dots to know its real HERF.

Homeowners who have floored with 'counterfeit' HERF enjoy NO right to warranty for the product.



AUTHENTIC EVORICH FLOORING HERF

'OTHER' VINYL FLOORING

## **A revolutionary flooring that is customised to your lifestyle needs..**

- 100% Waterproof
- 100% Odourless flooring
- Made with pure virgin vinyl
- Termite-free flooring
- Unique click-locking system
- Simple and glue-less installation

# Be assured that you have been floored with an *authentic* HERF®



Drop by our showrooms for a real look and feel of an authentic HERF

### EVORICH R&D Building and FLAGSHIP Gallery:

16 Tampines Street 92  
Singapore 528873  
(Behind Tampines SAFRA)



Transact with Evorich OFFICIAL flooring specialists



Verify with us if your ID is a registered partner of Evorich.

**Email us:**  
[marketing@evorich.com.sg](mailto:marketing@evorich.com.sg)



Follow us on our official social media accounts to be aware of the latest news and announcements



Register with our online warranty system

## Benefits of Having an *Authentic* HERF



True value for its high performance quality and durability.



True protection for all family members.



True protection that comes with genuine HERF Warranty.



True test reports and certificates that ensure product integrity.



## EVORICH Customers' *Testimonials*



### **SEAN SEAH**

It has been almost two years since we installed Evorich's HERF flooring and I am really glad that we chose Evorich! The flooring is durable, both child and senior friendly (anti-slipped), and is very easy to maintain clean.

Friends and colleagues who visit for the first time often mistook our house for premium BTOs. It is very recommended to install Evorich's HERF!



### **SERENE GOH**

We love our choice of Evo HERF flooring for our home as it goes very well with the overall Modern Victorian look that we wish to achieve, making it the perfect cozy haven for us. With its waterproof feature, the flooring is suitable for households with kids and pets. Our cats like to run around the house and because it's scratch resistant, we are grateful that the floor is still scratch-free. Thumbs up, Evorich!



### **DENNIS THIEN BOON BING & WIFE**

Just done up my 4-room house. Thumbs up to EVORICH. I myself was quite amazed with the product and workmanship. It was a resale unit, but when I decided to change the flooring, the whole interior also changed.





### **FARAH NIZAR**

Awesome! Evorich Flooring did a wonderful job on our living room and kitchen floor. Their workers were personable and did a great job. We were very pleased with the workmanship! We would like to thank Derry Sim and his team for their effort and providing excellent service, much appreciated.



### **LYNN NG**

I would like to praise the installers for a very good job done! They are very meticulous and independent, even though we have so much furniture they managed to work around it and move everything nicely by themselves.



### **MUHAMAD HISHAM**

I would like to compliment Evorich for a job well done. The service and installation were top-notch. Special thanks to Mr. Larry for his dedication, patience and understanding to our needs. I would definitely recommend Evorich to my friends and family. Kudos to Evorich and Mr. Larry. Keep up the phenomenal work!





## Overseas Manufacturing Facilities

EVORICH, a trusted name in the flooring industry, has consistently delivered top-quality products to homeowners and commercial spaces in Singapore and beyond. Our commitment to excellence is evident not only in our extensive product range but also in the world-class manufacturing facilities we operate overseas. These facilities play a pivotal role in our ability to offer affordable flooring solutions without compromising on quality or safety.

To meet the growing demand for premium vinyl flooring, EVORICH has established state-of-the-art manufacturing plants across Asia. Strategically located in countries with advanced production capabilities, our facilities are equipped with the latest machinery and technology. This ensures high production efficiency, precise quality control, and the ability to innovate with new flooring designs and materials.

Each facility is staffed by highly skilled professionals dedicated to maintaining EVORICH's high standards. Rigorous testing protocols are implemented at every stage of the production process, ensuring that every flooring product meets international benchmarks.





**HOTLINE**

+65 6348 7333

**WHATSAPP**

+65 8795 2118



**EMAIL**

biz@evorich.com.sg



**WEBSITE**

www.evorich.com.sg

**EVORICH R&D** 

**Production · Experience Exhibit**

16 Tampines Street 92 Singapore 528873  
(Behind Tampines SAFRA)

**EVORICH CONCEPT SALES GALLERY**  
**Floors·Decks·Walls·Ceilings**

1 Tampines North Drive 1, #02-38 T-Space  
EVORICH Block, Singapore 528559  
(In between IKEA, Giant & Courts)

**EVORICH CURATED STUDIOS**  
**Floors·Decks·Walls·Ceilings**

10 Jln Kilang, Bukit Merah Enterprise Centre  
#02-02, Singapore 159410  
(Entire Stretch of Level 2 facing the main road)



Represented Singapore  
in ASEAN-Japan Young  
Entrepreneurs Forum

