

EVORICH[®]

evoFLUTE

Fluted Wall Panels

A sustainable product for
interior cladding



@evorichflooring

WWW.EVORICH.COM.SG

What is **evoFLUTE**



evoFLUTE is a modern, minimalistic wall panel with a stylish accent.

These timeless styles transform your spaces with their luxurious texture and astonishing detailing.

Features



**ECO
FRIENDLY**



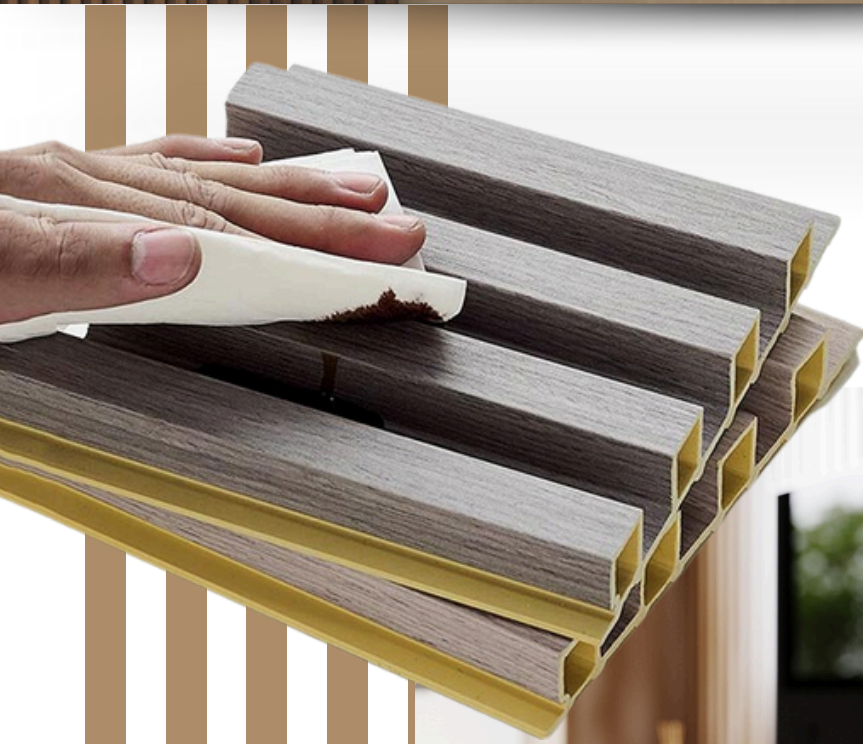
**WATER
PROOF**



**TERMITE
FREE**



**MOLDING
FREE**



Easy to Maintain
Affordable Price!



Seamless

Installation

Our evoFLUTE are cut with desired precision and are cladded onto the wall with industrial standards adhesive.

(Panels may require screws for reinforcement.)

Care & Maintenance

It is almost hassle-free in cleaning; it requires light dusting with a dry cloth to quickly clean up any dust build-up.

Eco-Friendly

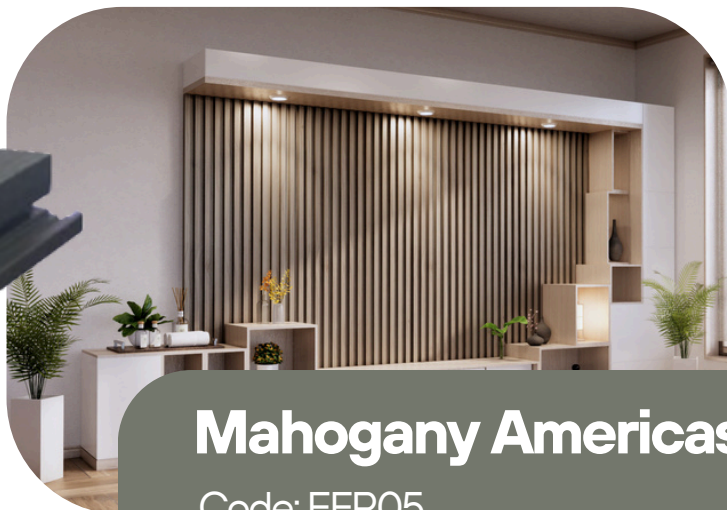
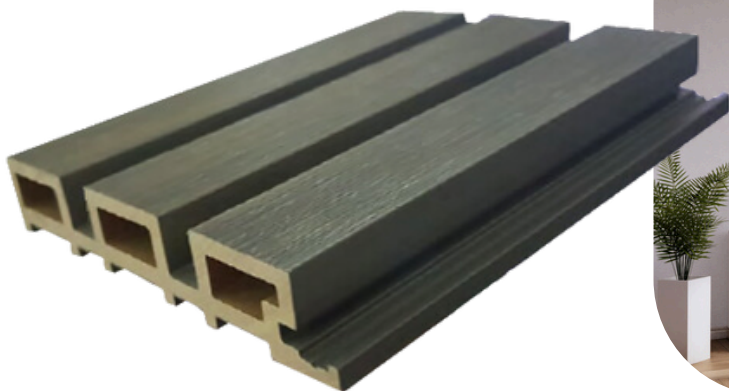
With the appearance and texture of natural wood, no forest and trees are harmed during the process of making evoFLUTE.

evoFLUTE

Available in
various colours!



evoFLUTE Colours Collection



Mahogany Americas

Code: EFP05

Thickness: 28 mm

Dimensions: 220mm x 2800mm

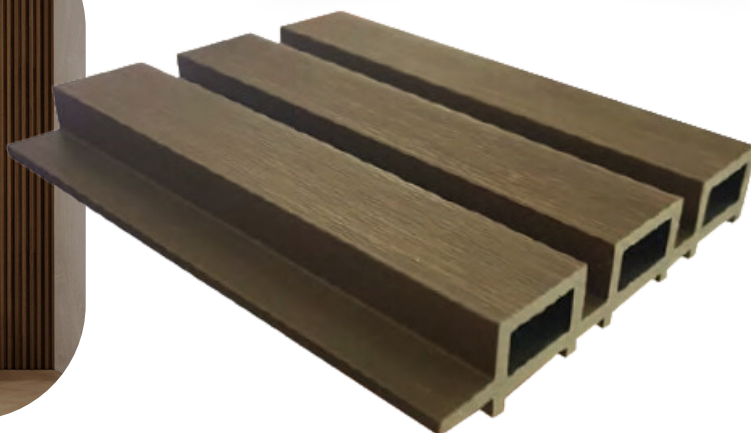


Tensile Cypress

Code: EFP02

Thickness: 28 mm

Dimensions: 220mm x 2800mm



Swedish Pearl

Code: EFP06

Thickness: 56 mm

Dimensions: 220mm x 5600mm

evoFLUTE Colours Collection

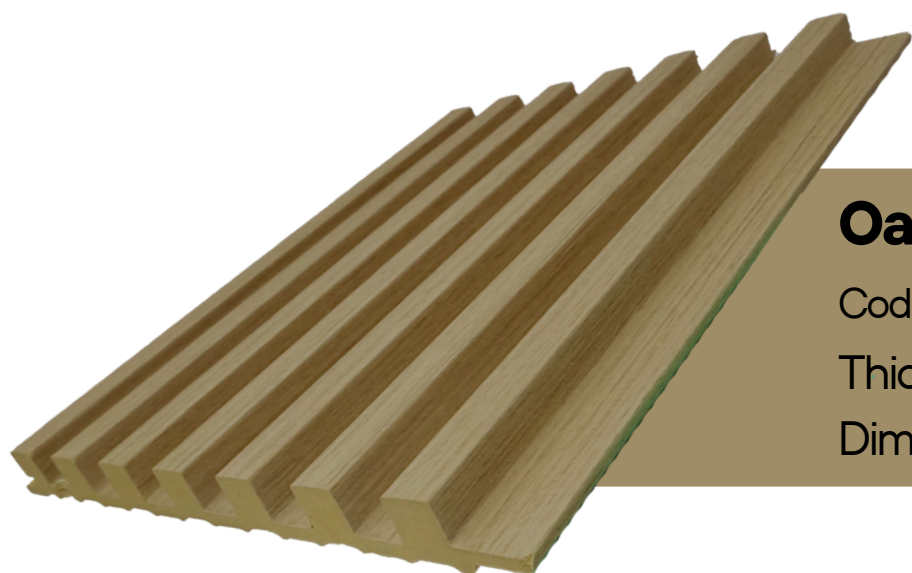


Oak Latte Fishbone

Code: EIRP116/CKS156

Thickness: 12.8mm

Dimensions: 2800mm x 156mm

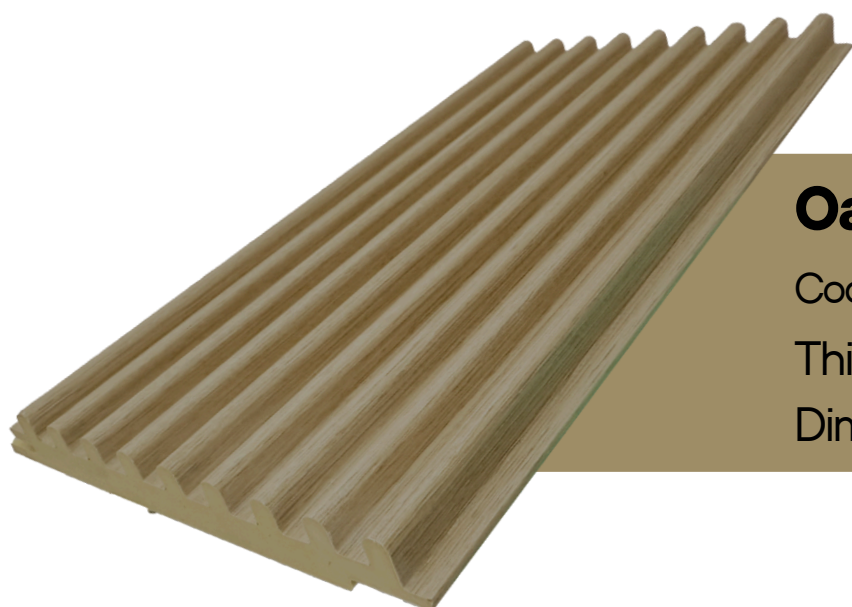


Oak Latte Fishbone

Code: EIRP116/CKS140

Thickness: 13mm

Dimensions: 2800mm x 148mm



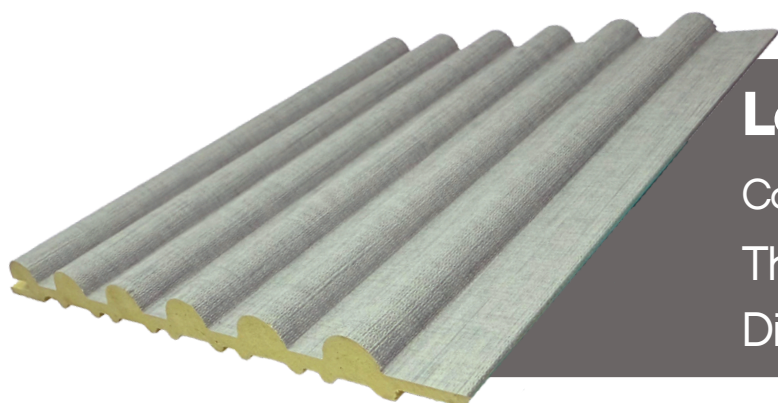
Oak Latte Fishbone

Code: EIRP116/M100

Thickness: 12mm

Dimensions: 2800mm x 99.59mm

evoFLUTE Colours Collection

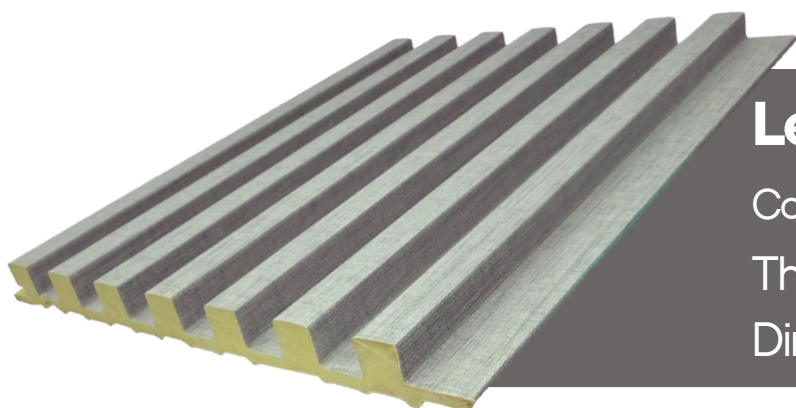


Leather Shimmer Fishbone

Code: EIRP108/CKS156

Thickness: 12.8mm

Dimensions: 2800mm x 156mm

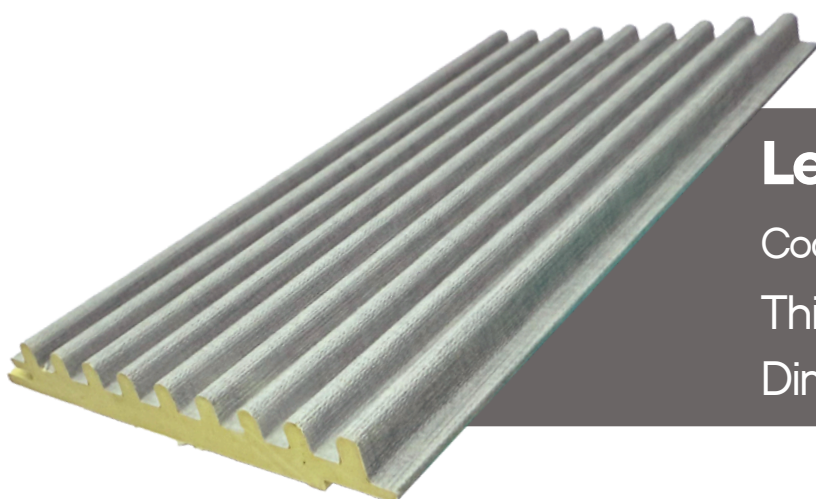


Leather Shimmer Fishbone

Code: EIRP108/CKS140

Thickness: 13mm

Dimensions: 2800mm x 148mm

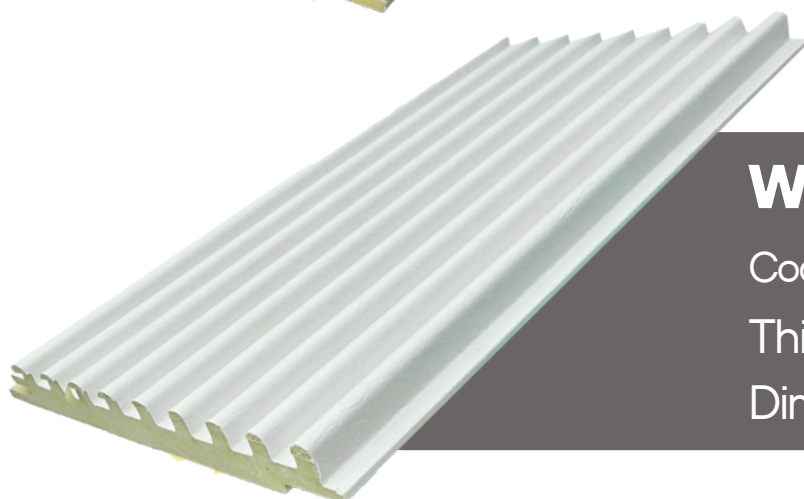


Leather Shimmer Fishbone

Code: EIRP108/M100

Thickness: 12mm

Dimensions: 2800mm x 99.59mm



White Leather

Code: PF995/M100

Thickness: 12mm

Dimensions: 2800mm x 99.59mm







Test the Vinyl you breathe

EVORICH®

Since 2003 ...



☎ +65 6348 7333

✉ sales@evorich.com.sg

☎ +65 6342 9331

📱 @evorichflooring

WhatsApp us at



+65 8795 2118

www.evorich.com.sg

📍 **Evorich R&D Production • Experience Exhibit
(Cheques Receiving Centre):**
16 Tampines Street 92 Singapore 528873

📍 **EVORICH Concept Sales Gallery**
Floors • Decks • Walls • Ceilings:
1 Tampines North Drive 1 02-38 T-Space,
Evorich Block, Singapore 528559

📍 **EVORICH Floors, Deck, Walls Training Academy:**
27 Kim Chuan Terrace Singapore 537045