

# ***Evo High End Resilient Flooring (Evo HERF)***



**Evorich Flooring**

*"the leader in eco floors"*





# Featured on Singapore Media:



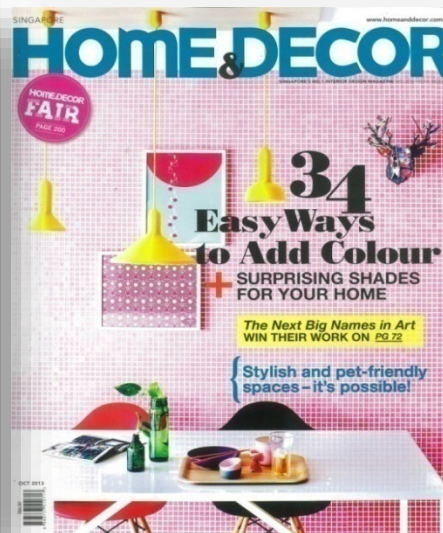
## Squarerooms Magazine

Aug 2011, Nov 2011, Feb 2012, May 2012, Nov 2012 & May 2013 issue; Evorich Flooring (Evo HERF) was featured as eco friendly flooring & also the annual issue of Ideal Home 2014.



## Style: Living Magazine

September 2013 issue; Evorich Flooring (Evo HERF) was featured easy maintenance flooring



## Home & Decor Magazine

October 2013 issue; Evorich Flooring (Evo HERF) was featured on pet friendly flooring



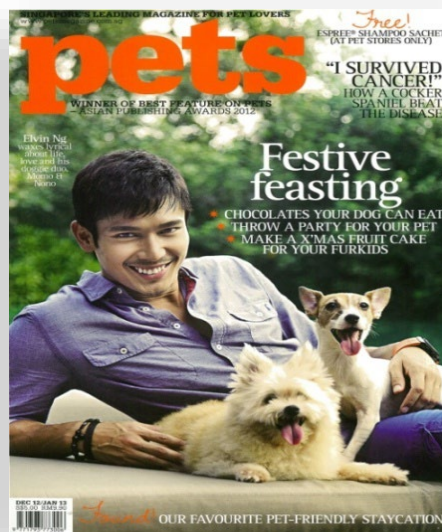
## Ideal Home

Vol. 6 on Evo HERF



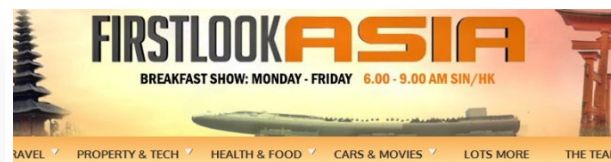
## PETS Magazine

Nov 12, Feb 13 and Apr 13 issue; Evorich Flooring was featured on giving advice on pet friendly flooring



## Lookbox Living

#23 Issue on Decking editorial  
#27 issue on Evo HERF



## Pet Friendly Homes



## Pet Friendly Homes

Going that extra mile to make your home comfortable for your furkids. In this edition of Real Deal, we meet a couple who's spent money, time and energy into making their home pet-friendly.



# TV Shows Floored with Evo HERF:



**Mediacorp Channel 5: Tanglin**



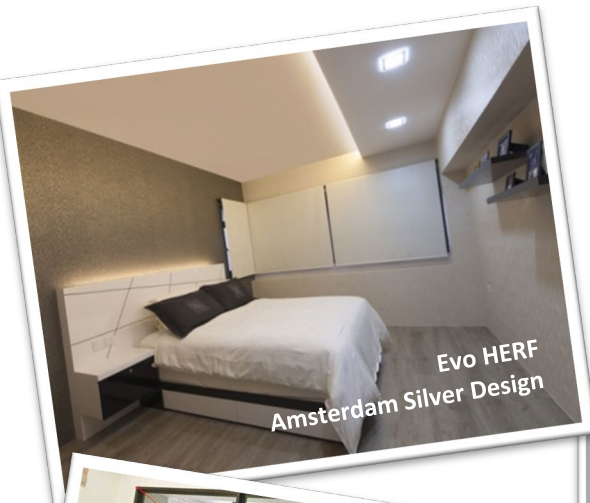
**Mediacorp Channel 8: Peace & Prosperity**  
(Chinese: 富贵平安)



**Mediacorp Channel 8: Please be my Guest**

# Residential

**Evo High End Resilient Flooring** is a new type of flooring recently introduced into the flooring Singapore market; it is an improved version of flooring to laminate, wooden flooring. It is also known as "*waterproof laminate flooring*" by some interior designers and contractors in Singapore. It stands as a strong substitute to conventional laminate and parquet flooring due to its absolute waterproof and termite-free properties. True to its name, Evo HERF makes a standard room interior looks high-end with its easy installation process and a variety of 12 design choices.



Evo HERF  
Amsterdam Silver Design



Evo HERF  
Natural Hickory Design



Evo HERF  
Amsterdam Eggshell Design



Evo HERF  
Hazelnut Design



Evo HERF  
Aspen Oak Black Design



**A** strong feature about Evo High End Resilient Flooring is that it can be re-used over and over again. Say you installed it in your home, after 5 years, you want to move house; and in fact, you can actually "bring" your existing high end flooring along to your new home. What it means to you, that the investment on high end resilient flooring is worthwhile as it can be recycled and therefore save you tons of money in the long run.

Evo High End Resilient Flooring comes with a 10-year light commercial and lifetime residential limited warranty. Installation is very easy as you require no underlay or expertise doing it. All you need is a ruler and pen knife to do the installation.



## High End Resilient Flooring (HERE)

Amsterdam Eggshell Design  
*at Yishun Riverwalk*



✔ Eco-Friendly

✔ Highly Scratch Resistant

✔ 100% Waterproof

✔ Lifetime Warranty



# Evo HERF for Kitchen



Evo HERF Amsterdam Eggshell Design



Evo HERF Hazelnut Design



Evo HERF Markham Oak Light Design



Evo HERF Pearl Oak Design

© 2016



# Evo HERF for Living Room



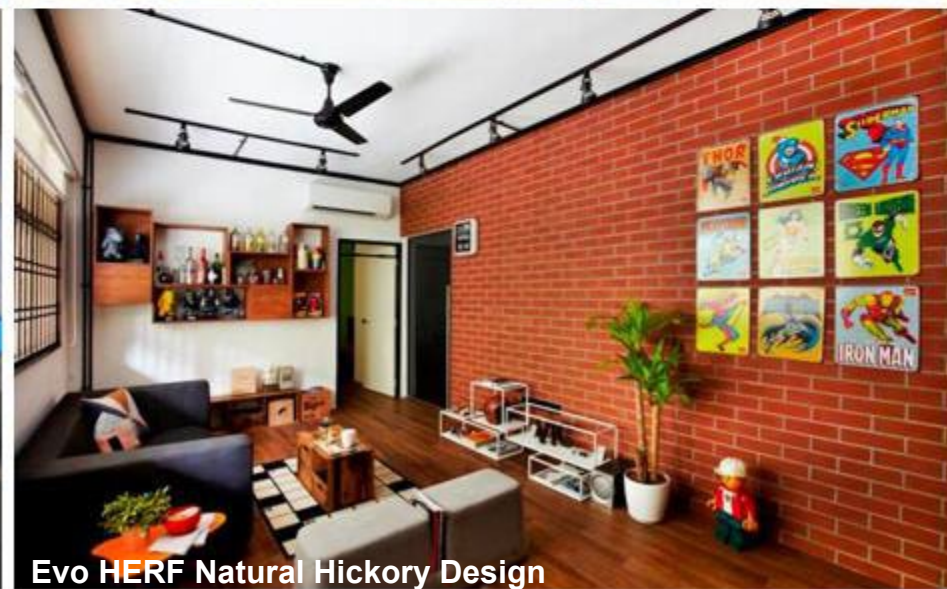
Evo HERF Amsterdam Eggshell Design



Evo HERF Amsterdam Light Tan Design



Evo HERF Amsterdam Light Tan Design

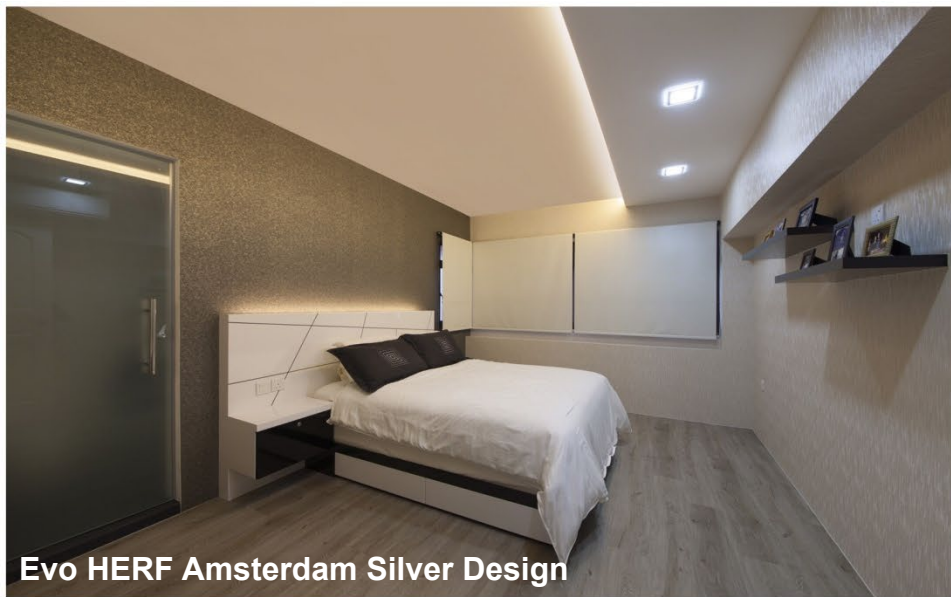


Evo HERF Natural Hickory Design

© 2016



# Evo HERF for Bedroom





# Evo High End Resilient Flooring Project References

Project: **PCF Kindergartens and Childcare Centres in Singapore**

Flooring: Evo HERF Area: more than 4650 sqm

Status: Completed 11 units to date

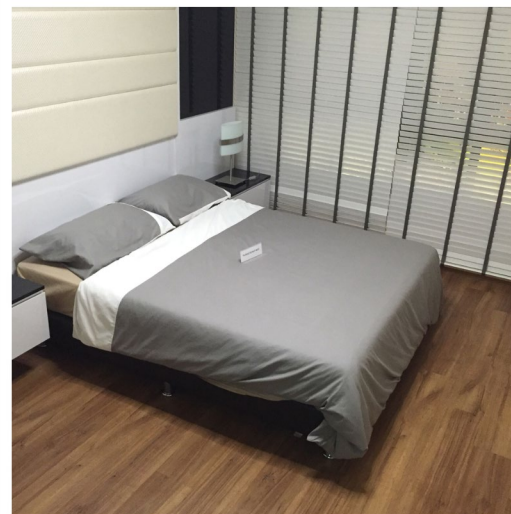
- ✓ *98 Joo Chiat Road #02-01 / 02-02 Singapore 427633*
- ✓ *405 Joo Chiat Road Singapore 427633*
- ✓ *Punggol Community Centre #02-04*
- ✓ *31 Balam Road Singapore 370031*
- ✓ *104 Pemimpin Place, Coral Park Singapore 576101*
- ✓ *Blk 233 Simei St., #01-148 Singapore 520233*
- ✓ *Blk 545 Bedok North Street 3 Singapore 460545*
- ✓ *125 Serangoon North Ave 1 Singapore 550125*
- ✓ *Blk 216 Pasir Ris Street 21 Singapore 510216*
- ✓ *Blk 465 Jurong West Street 41 Singapore 640465*
- ✓ *Blk 823 Jurong West, #B1-462 Singapore 640823*







my  
nice  
home  
GALLERY



SINGAPORE HDB SHOWFLAT with *Evo HERF*



# Nurseries, Schools and Childcare Centres

Evo High End Resilient Flooring is recommended for nurseries, kindergartens, playrooms, schools and childcares because the product is certified to have very low in formaldehyde emission (E1 EN standard); required no glue during installation; very easy to clean and maintain due to its 100% waterproof feature.



Baby Changing Room @ IMM



Playroom

© 2016







Evo HERF Markham Oak Medium,  
Playnation, Scape Branch



The Blue House Nursery, Turf Club Road



The Blue House Nursery  
Turf Club Rd



Kumon

© 2016







Heguru Education Centre



My Gym, West Gate



11 PCF Centres in Singapore



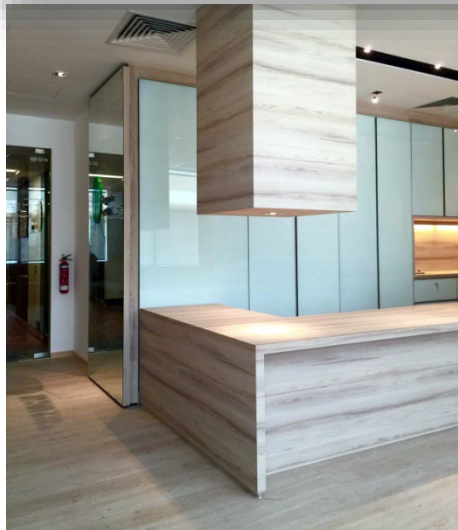
Childcare Centre, One Peminpin

© 2016





# Hospitals and Clinics

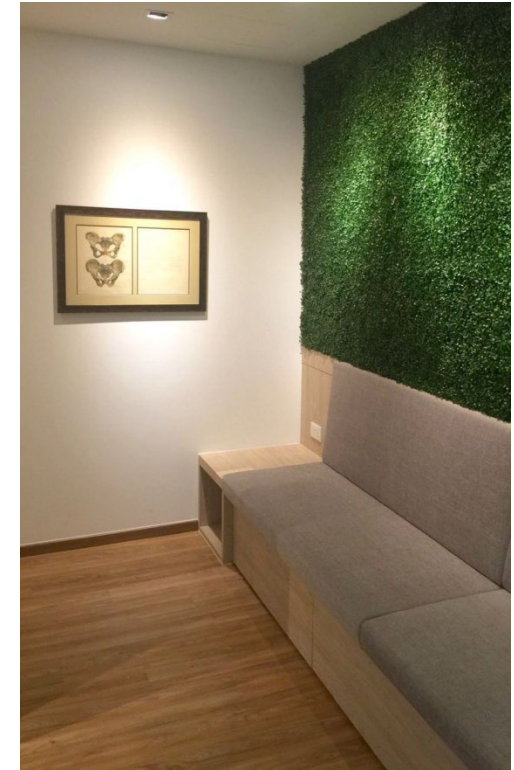
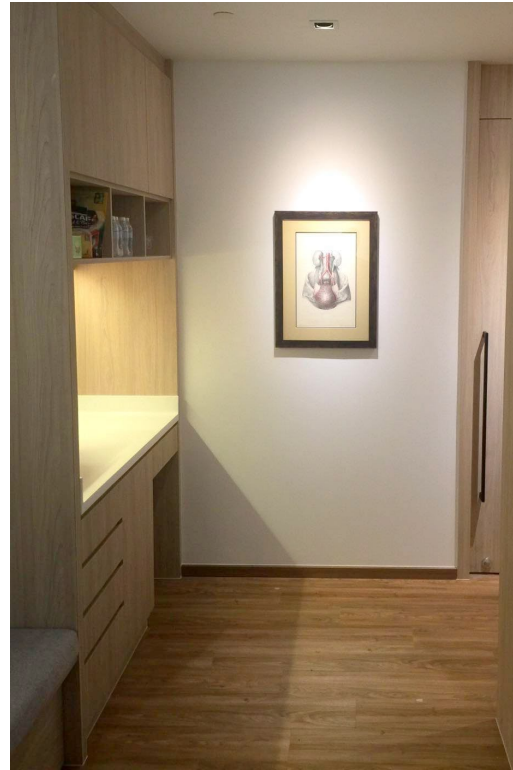
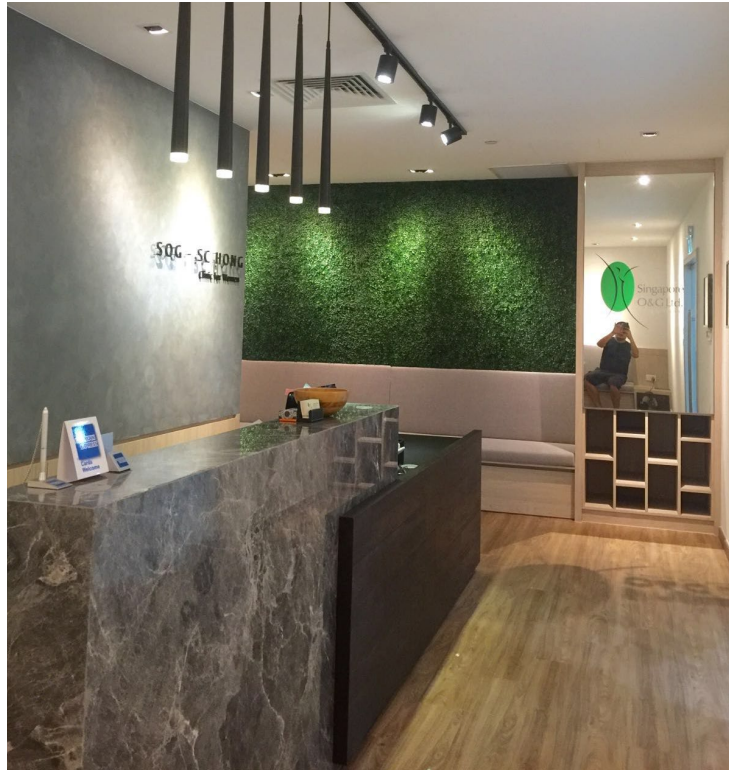


**Mount Elizabeth Novena Specialist Centre**

**38 Irrawaddy Road #10 - 30 Mount Elizabeth  
Novena Specialist Centre Singapore 329563**

**Evo HERF - Amsterdam Eggshell Design**

# Hospitals and Clinics



**Evo HERF – Hazelnut Design**

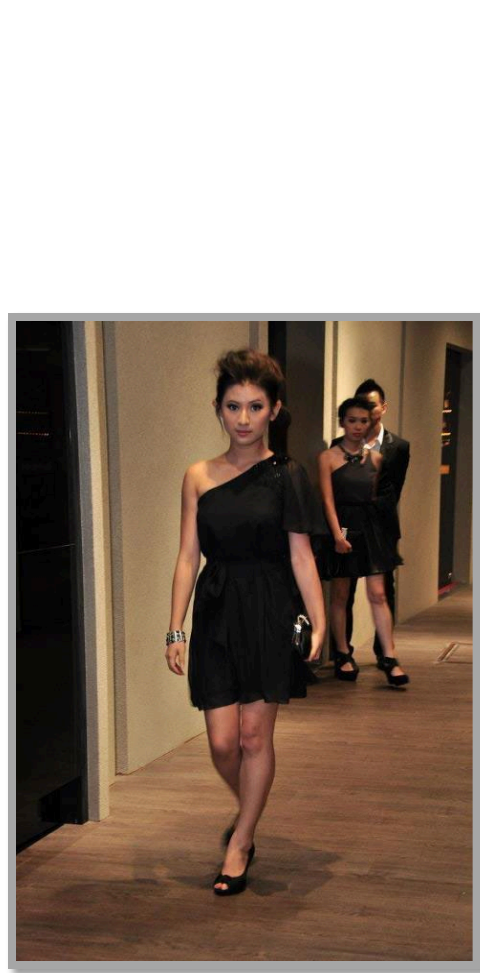
**SOG – SOC Clinic for Women  
Mount Alvernia Hospital**

**820 Thomson Road #07-62 Mount Alvernia  
Medical Centre Singapore 674623**



# Restaurants, Cafes, Lounge and Wine Bars

The 100% waterproof feature for Evo High End Resilient Flooring (Evo HERF) makes it one of the popular flooring options for restaurants, cafes, lounges and wine bars. Restaurateurs can enjoy the luxury of wood or marble-like flooring and thereby giving the guest experience, that feeling of exquisiteness.



**Covelli Italian Bistro & Wine Bar @ Orchard Central**  
**Evo HERF Durban Oak Design**



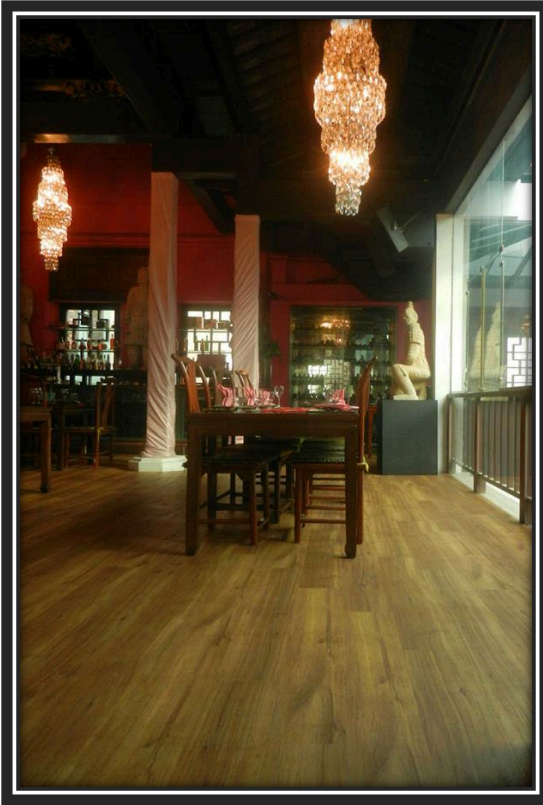
**In Italy Restaurant @ Craig Road**



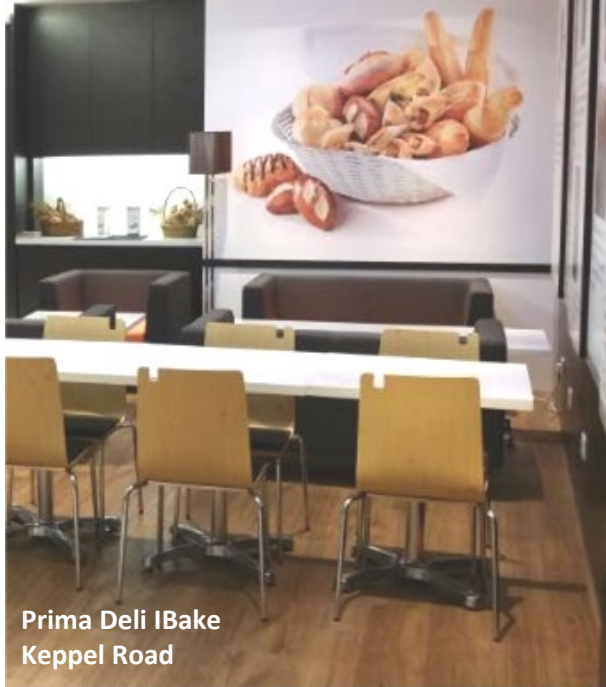
**Singapore Korean School - Canteen**

# Forbidden City @ Clark Quay

Evo HERF Markham Oak Light & Aspen Oak Black







Prima Deli IBake  
Keppel Road



Miyabi Jap Restaurant  
Raffles Town Club



Café Near NTU Auditorium



Botak American Diner



Pu3 Restaurant



The Pelican  
One Fullerton

© 2016





# Gym, Studios and Sports Recreation Areas

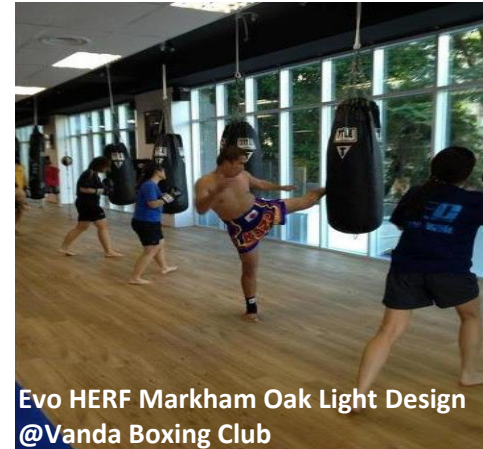
Evo High End Resilient Flooring, being 100% waterproof and stain resistant is very suitable for gyms, studios and sports recreation areas as sweat stains and smell can be very much minimized. Evo HERF has good impact resistance and slip resistance which enhances safety as well.



Pilatique Pilates Studio (Singapore)



St Francis Methodist School - Sports Recreation Hall



Evo HERF Markham Oak Light Design  
@Vanda Boxing Club



Fitness One Gym @ KL

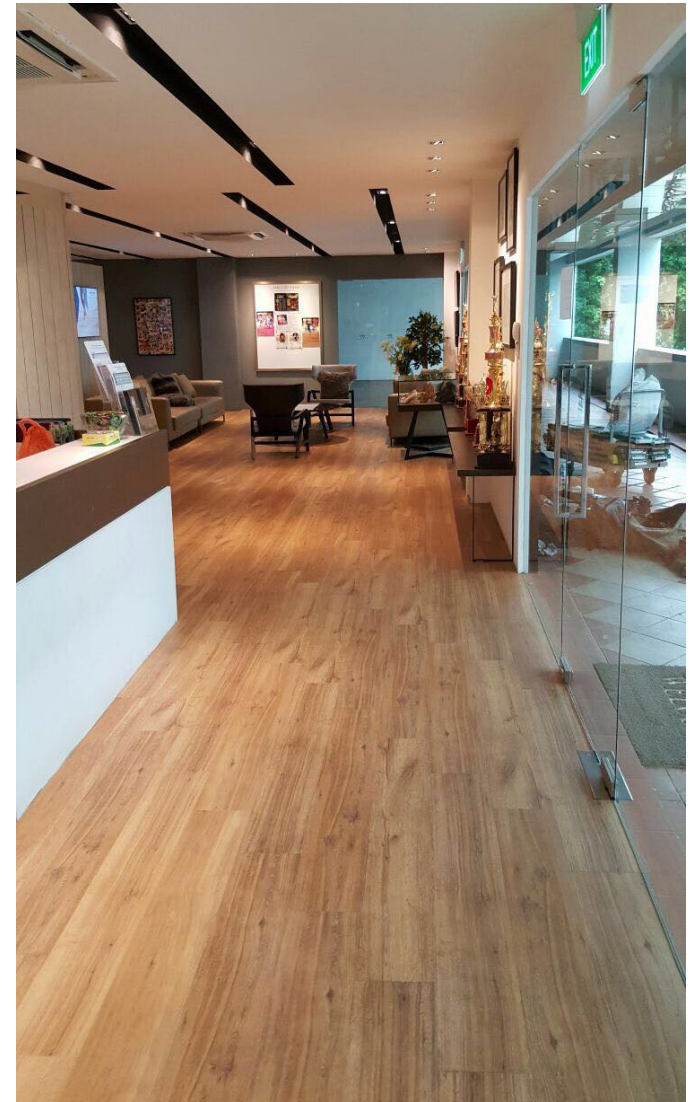
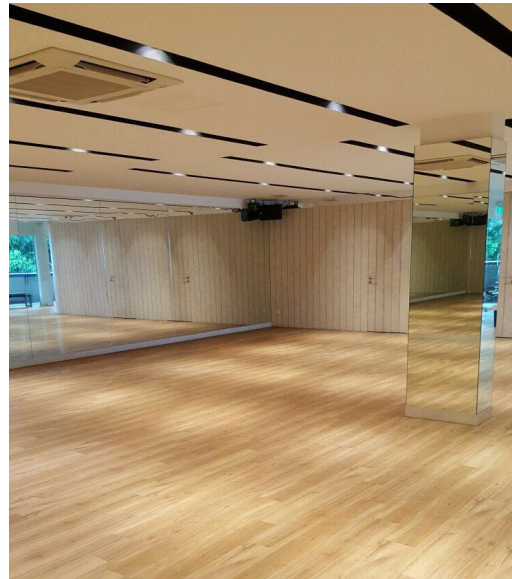


Hamilton Scotts Gym

© 2016



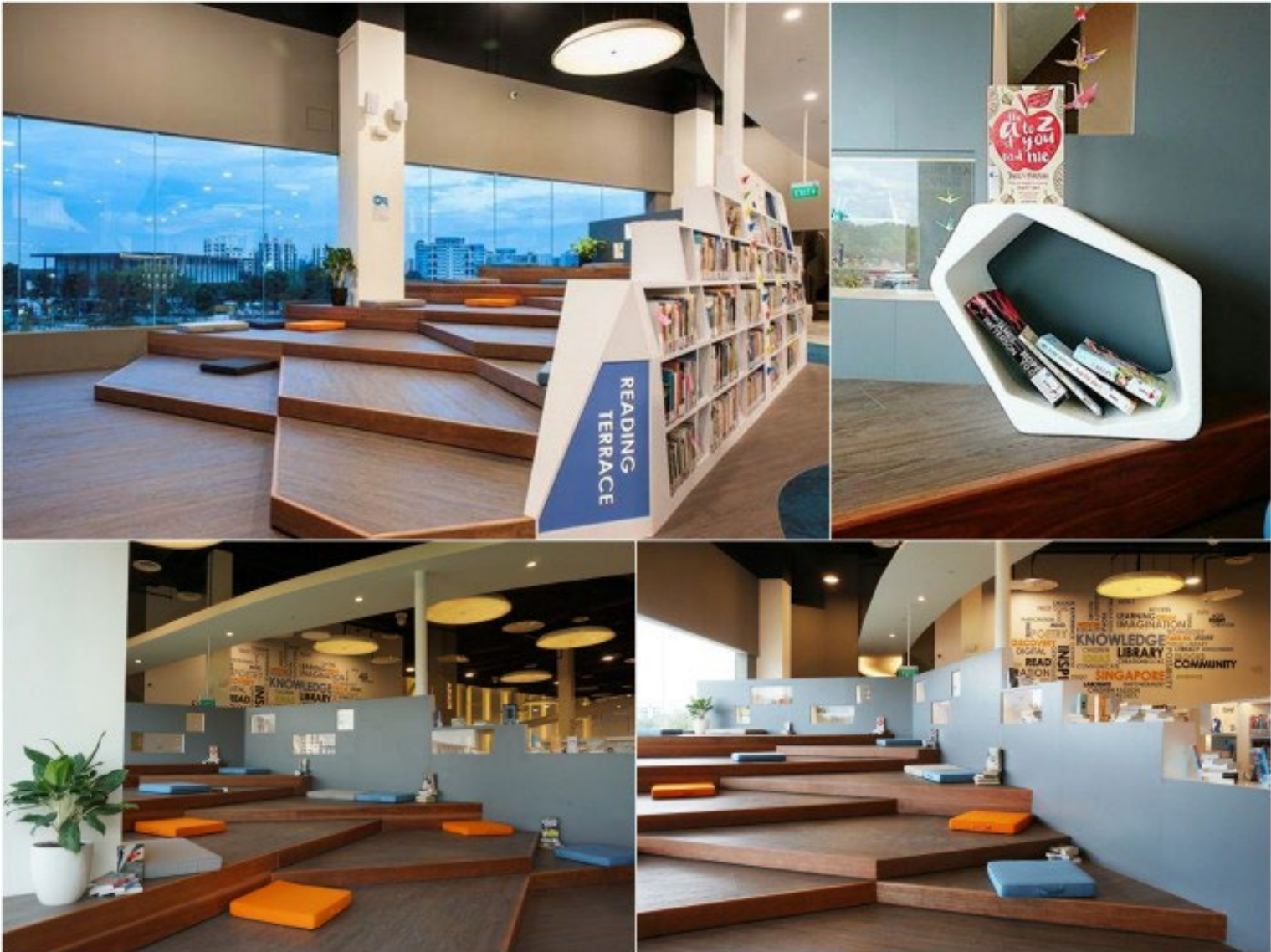
# Dance Studio



**Shawn & Gladys Dance Academy  
Evo HERF – Markham Oak Light**



# Pasir Ris Public Library – Evo High End Resilient Flooring (Evo HERF) Durban Oak Design



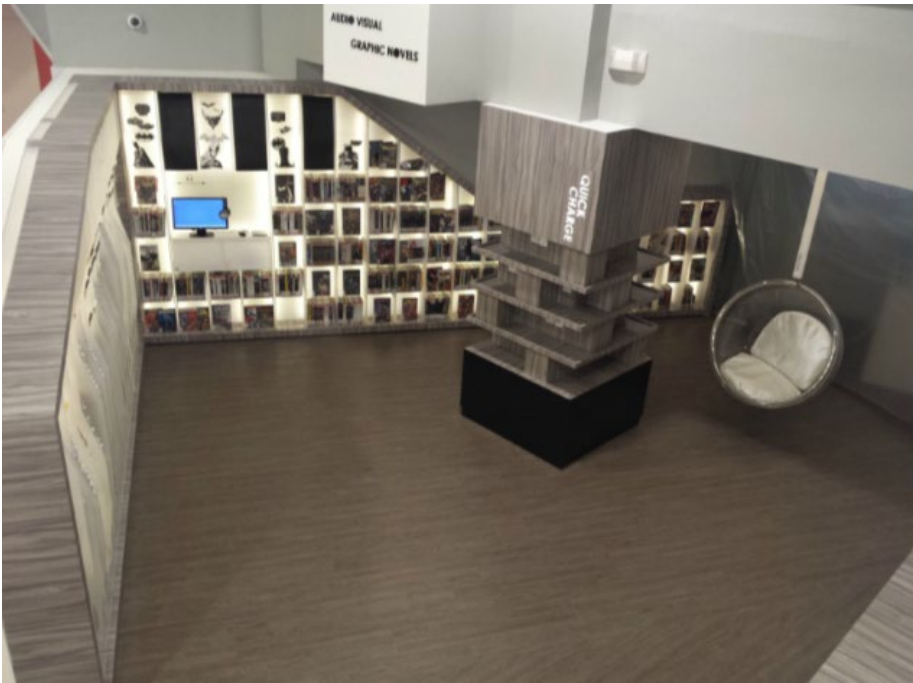
*This area - reading terrace with windows overlooking Pasir Ris Park meant to provide readers with a serene space reminiscent of reading by the park. Evorich's Evo HERF - Durban Oak Design adds an exciting and inviting ambience to a comfortable and relaxing space for every reader.*

*Photo credits to [Channelnewsasia.com](http://Channelnewsasia.com)*

*Evo High End Resilient Flooring (Evo HERF) Platform - Durban Oak Design*



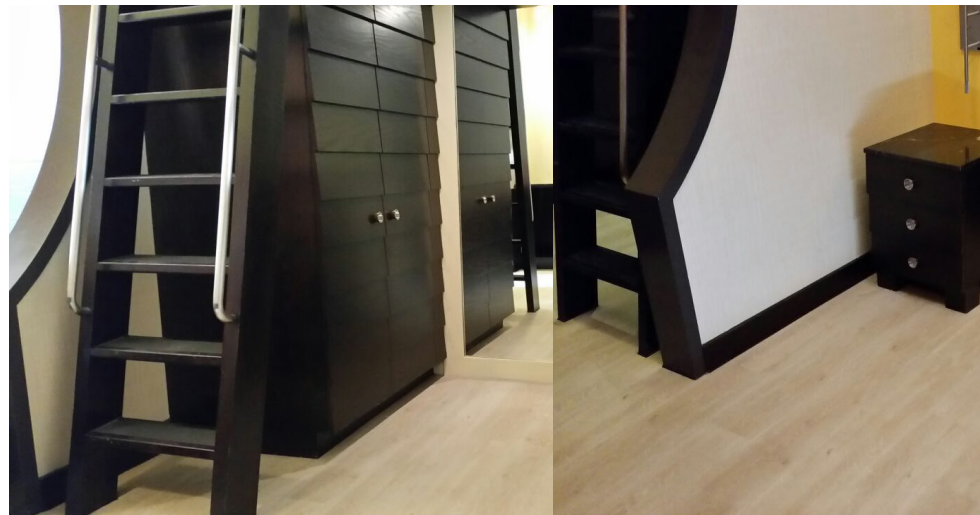
Pasir Ris Public Library – Evo High End Resilient Flooring (Evo HERF) Durban Oak Design



# Hotels and Other Commercial Projects



**Clover Hotel, Hong Kong Street**  
**Evo High End Resilient Flooring – Durban Oak**  
**Design**



**Festive Hotel, Sentosa Island**  
**Evo High End Resilient Flooring – Amsterdam Eggshell**  
**Design**

© 2016





**Neko Ko Niwa Cat Café, Boat Quay – The first Cat Café in Singapore**

# Evo High End Resilient Flooring (Evo HERF) as Pet-Friendly Flooring

**D**esigned for families with pets and active lifestyle, High End Resilient Flooring (Evo HERF) is an ideal flooring for pet-lover homeowners. Whether you share your home with a cat, a dog or any combination of furry, feathered or scaled friends, it's necessary to have the best pet-friendly flooring.

Evo HERF solves problems common to pet-owning households. Most pet-lover homeowners faces the same issues in creating a home environment that is suitable for pets and people alike. Factors to consider in choosing the right flooring for their pets are: water proof (or at least moisture resistant), scratch and abrasion resistant, low in maintenance, odor-free and easy to clean.



## Pet Friendly Homes



### Pet Friendly Homes

Going that extra mile to make your home comfortable for your furkids. In this edition of Real Deal, we meet a couple who's spent money, time and energy into making their home pet-friendly.

**Photo Credits to Channel NewsAsia**

HERF by EVORICH was featured in Channel NewsAsia as Asia's leading multinational floor for pet lovers' homes.





# Evo High End Resilient Flooring (Evo HERF) as Pet-Friendly Flooring



**Ginny & Friends - Where Dogs Play All Day**  
<http://www.ginnydogcare.com/>

**Dog Day Care & Grooming Centre**  
**Evo HERF – Natural Hickory**



# What makes Evo HERF so unique & extraordinary?



Overlaying  
Installation System

## OVERLAYING INSTALLATION SYSTEM

High End Resilient Floor (HERF) is installed by overlaying it on the current flooring. Just simply install it straight over most hard surfaces including ceramic tiles, timber, concrete and even your existing vinyl floor. Underlay is not required.



Lifetime Warranty

## LIFETIME LIMITED RESIDENTIAL WARRANTY

EVORICH Flooring guarantees that the surface of floor panels will not wear off for 10-year Light Commercial application and Lifetime Residential limited application if used according to the conditions specified by the manufacturers.



Slip Resistant

## HIGHLY SLIP RESISTANT

EVORICH Flooring's High End Resilient Floor (HERF) has been certified for DIN 51130 standard for slip resistance. Its hard wearing embossed surface reduces accidents caused by slipping.



100% Waterproof

## 100% WATERPROOF

EVORICH Flooring's High End Resilient Floor (HERF) is made from top quality pure virgin vinyl resin and because it is not made of wood, the floor does not swell or deform under the influence of water.



Termite Free

## TERMITE-FREE

EVORICH Flooring's High End Resilient Floor (HERF) is not possible to breed any dusty mites, termites or any wood worms as this flooring is not constructed from wood.



Green Policy

## ENVIRONMENTALLY-FRIENDLY

EVORICH Flooring's High End Resilient Floor (HERF) is produced using virgin vinyl as well as recyclable material through environmentally-friendly production methods.



Fire Resistant

## FIRE-RESISTANT

Certified Bfl-S1 for BS EN13501 Standard for flammability and EN ISO 9239-1 Standard in determination of the initial type testing of fire behaviour.



Commercial Grade

## COMMERCIAL GRADE WEAR LAYER

Having thick high commercial grade wear layer, HERF becomes more durable and may be used in both residential and commercial spaces.



DROLOCK 100

## DROLOCK 100

EVORICH Flooring's High End Resilient Floor (HERF) has been equipped with patented DROLOCK 100 for simple and glueless installation.

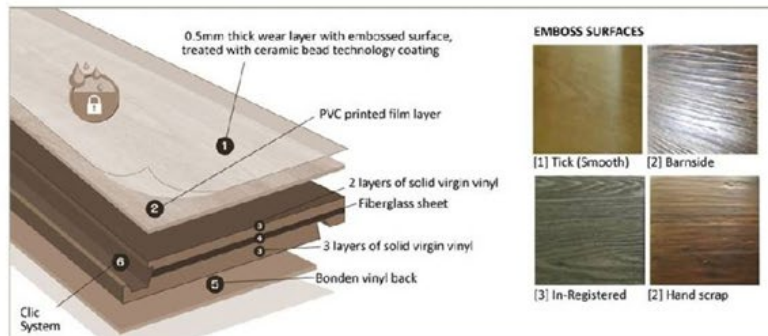


E1 Formaldehyde

## E1 FORMALDEHYDE

Very low formaldehyde emission - E1 Category; EVORICH Flooring's High End Resilient Floor (HERF) is certified under the test standard of EN717-1 for determination of formaldehyde content.

## Products specifications, structure and installations



- Do-it-Yourself (DIY) concept flooring,
- Glue-less and no messy installation
- You can use it immediately after installation

- Underlay not required
- Cut with utility knife, no heavy tools required
- Minimal wastage on installation



Position the 2 planks



Angle the second plank and align the interlocking strips



Press down and lock into place

# Evo High End Resilient Flooring (Evo HERF) & Its Benefits

What is Evo High End Resilient Floor?

**E**vo High End Resilient Flooring (Evo HERF) is pure virgin vinyl flooring which has gained popularity over the years especially to eco-conscious consumers. Best suited flooring for residential and commercial establishments like schools, restaurants and hotels. It has multiple health and environmental benefits compared to conventional vinyl flooring.





# Evo High End Resilient Flooring Test Reports

Characteristic	Tests	Results
Length, width, squareness and straightness	ISO 24342:2007 +A1 : 2012	Pass
Overall Thickness	ISO 24346:2006	Pass
Total Mass Per Area	ISO 23997:2007	9840g/m <sup>2</sup>
Residual Indentation	ISO 24343-1:2007	Pass
Dimensional Stability After Exposure to Heat /Curling	ISO 23999:2008	Pass
Colour Fastness to Artificial Light	EN ISO 105-B02: 2013	Grade 6
Chair Wear Resistance	ISO 4918:2009	Pass
Wear Layer Thickness	ISO 24340:2006	Pass
Overall Thickness	ISO 24346:2006	Pass
Level of Use	ISO 10582:2010 ISO 10874:201	Class 33, Commercial heavy Class 42 : Light industry general
Density	ISO 23996:2007	1.991g/cm <sup>3</sup>
Effect on Stains	ISO 26987:2008	Class 0
Heavy Metal Content	EN 71-3 : 1994 + A1:20000/ AC: 2002	Pass
Thermal Resistance	ISO 8301: 1991	Mean value – 0.04m <sup>2</sup> . K/W
Sound Reduction	ISO 10140-3:2010	Approximate 6dB
Slip Resistance	DIN 51130:2010	R9
Reaction to Fire	EN 14041:2004	B <sub>f1</sub> -s1
Content of Pentachlorophenol	EN 14041:2004	< 0.5 ppm
Formaldehyde Emission	EN 14041:2004	E1
Slip Resistance	SS 485	Dry floor – 0.67 Wet floor - 41
Toxicity Test	BS 6853	Pass
Resistance to Surface Abrasion Test	ISO 10545-7 : 1996	Class 4
Determination of Resistance to Stubbed and Burning Cigarettes	BS EN 1399	Rating 3

# Comparison between Evo HERF and Other Common Types of Flooring

	Evo High End Resilient Flooring (Evo HERF)	Laminate Flooring	Teak Parquet	Ceramic tiles, Granite, Marble & Homogenous tiles	Conventional Vinyl
Easy Maintenance	✓	✓		✓	
Safety & Care	✓	✓	✓		
Colour Choice	✓	✓		✓	✓
Easy Installation & Replacement	✓	✓			
Overlaying Installation System (hacking of current flooring not required)	✓	✓			
Firm Feel when Stepped on	✓		✓	✓	✓
Highly Scratch Resistance & Highly Durable	✓	✓		✓	
High Skid Resistance	✓		✓		✓
Manufacturer's Warranty	✓	✓			
Waterproof	✓			✓	✓



# The Basic Certificates for Evo High End Resilient Flooring (Evo HERF)

## TEST REPORT: 7191146830-CHM16-MA-CR1

Date: 19 SEP 2016 Tel: +65 68851312 Fax: +65 67784301

Client's Ref: Email: zhou.xiao@tuv-sud-psb.sg

Note: This report is issued subject to the Testing and Certification Regulations of the TÜV SÜD Group and the General Terms and Conditions of Business of TÜV SÜD PSB Pte Ltd. In addition, this report is governed by the terms set out within this report.



PSB Singapore

Choose certainty.  
Add value.

### SUBJECT

Evaluation of Vinyl Product Samples comply with Singapore Green Building Council (SGBC)

### CLIENT

Evorich Holdings Pte Ltd  
21 Kim Chuan Terrace  
Singapore 537042

Attn: Mr Raymond Foo

### DESCRIPTION OF SAMPLE

Four sets of samples labelled as follow were received on 29 Aug 2016:

Sample Description : Evo HERF (High End Resilient Floors)

### DATE OF ANALYSIS

07 Sep 2016 – 15 Sep 2016



Laboratory:  
TUV SÜD PSB Pte. Ltd.  
No.1 Science Park Drive  
Singapore 118221

Phone : +65-6885 1333  
Fax : +65-6776 8670  
E-mail: enquiries@tuv-sud-psb.sg  
www.tuv-sud-psb.sg  
Co. Reg : 199002667R

Regional Head Office:  
TUV SÜD Asia Pacific Pte. Ltd.  
1 Science Park Drive, #02-01  
Singapore 118221  
TUV®

Page 1 of 5

TEST REPORT: 7191146830-CHM16-MA-CR1  
19 SEP 2016



PSB Singapore

### METHOD OF TEST

#### 1. Emission Test

The following emission tests were conducted according to ASTM D5116-10 – *Standard Guide for Small-Scale Environmental Chamber Determinations of Organic Emissions From Indoor Materials / Products*, as reference.

- 1) Total Volatile Organic Compounds (TVOC) Emission
- 2) Formaldehyde Emission

#### Emission Test Condition

- 1) Chamber Volume: about 1m<sup>3</sup>
- 2) Temperature: 23°C
- 3) Relative Humidity: 50%
- 4) Air Exchange Rate: n=1 (air change rate per hour in the chamber)
- 5) Chamber Loading Ratio: 0.4-1.0 m<sup>2</sup>/m<sup>3</sup> (total exposed surface area of the test specimen divided by the net air volume of the emission test chamber)
- 6) Air Velocity: 0.1 m/s to 0.3 m/s (over the surface of the test specimen)

#### Characteristics of the Test Chamber

- 1) 1 m<sup>3</sup> chamber meeting the requirements of ISO 16000-9 / ASTM D5116
- 2) Chamber Loading ratio for the tested sample: 0.41 m<sup>2</sup>/m<sup>3</sup>
- 3) Area specific air flow rate 2.4 m<sup>3</sup>/m<sup>2</sup>/h

Air samples were taken on the seventh day and duplicated.

- 1) For analysis, the air was sampled using constant flow rate pumps, equipped with absorbent containing Tenax to trap VOCs. (sampling and assay carried out according to ISO 16000-6 / ASTM D5116).
- 2) In addition, the air was sampled using constant flow rate pumps, provided with absorbent containing di-nitrophenylhydrazine (DNPH) grafted silica cartridge to trap aldehydes. (sampling and assay performed according to ISO 16000-3)
- 3) The Tenax samples were then desorbed by Automated Thermal Desorber System and then analyzed by Gas Chromatography coupled with Mass Spectrometry (ATD-GCMS).
- 4) The samples on DNPH cartridge were then desorbed to form the stable compound hydrazone, which was then assayed by Liquid Chromatography (HPLC) with UV / Diode Array Detector.

#### Calculation of Emission Concentration

For Singapore Green Building Product (SGBP) Certification, product emissions are required to meet the following exposure concentrations within 168 hours of testing.

Test	Condition(s) to be achieved for SGBP Rating			
	1 Tick	2 Ticks	3 Ticks	4 Ticks
TVOC Emission	≤ 1.0 mg/m <sup>3</sup>	≤ 0.5 mg/m <sup>3</sup>	≤ 0.25 mg/m <sup>3</sup>	≤ 0.1 mg/m <sup>3</sup>
Formaldehyde Emission	≤ 0.1 mg/m <sup>3</sup>	≤ 0.05 mg/m <sup>3</sup>	≤ 0.025 mg/m <sup>3</sup>	≤ 0.01 mg/m <sup>3</sup>

Page 2 of 5

# The Basic Certificates for Evo High End Resilient Flooring (Evo HERF)

TEST REPORT: 7191146830-CHM16-MA-CR1  
19 SEP 2016



PSB Singapore

## METHOD OF TEST (Cont'd)

### Emission Concentration Determinations

Emission Factor Calculations

$$EF = C \times (NL)$$

EF = emission factor (mg/m<sup>2</sup>·hr) or (mg/unit·hr)  
C = chamber concentration (mg/m<sup>3</sup>)  
N = chamber air exchange rate (hr<sup>-1</sup>)  
L = product loading (m<sup>2</sup>/m<sup>3</sup>)

- 1) Chromatographic analyses lead to determine experimental concentrations of compounds (C) at the end of the test (in mg/m<sup>3</sup>)
- 2) Area specific emission rates of the compounds (EF) are obtained by multiplying the experimental concentrations by the actual area specific air flow rate (NL) in the chamber (in mg/m<sup>2</sup>/h)

The model measurements were made with the following assumptions: air within open office areas of the building is well-mixed at the breathing level zone of the occupied space; environmental conditions are maintained at 50 % relative humidity and 23°C; there are no additional sources of these pollutants; and there are no sinks or potential re-emitting sources within the space for these pollutants.

The constant emission factor (as determined at 168 hour) is used to determine compliance with the SGBP Criteria by calculating an exposure concentration. The predicted exposure concentrations (C<sub>P,t</sub>) (mg/m<sup>3</sup>) are calculated from the modelled emission factors as:

$$C_{P,t} = EF_{m,t} \left( \frac{A}{V} \right) \left( \frac{1}{N} \right)$$

where,

C<sub>P,t</sub> = predicted exposure concentration at time t (mg/m<sup>3</sup>)  
EF<sub>m,t</sub> = modelled emission factor at time t (mg/m<sup>2</sup>·hr) or (mg/unit·hr)  
A = product area exposed in room (m<sup>2</sup> or unit)  
V = room volume (m<sup>3</sup>)  
N = room air change per hour (hr<sup>-1</sup>)

The model was set as Private office scenario in a 30.6 m<sup>3</sup> room (V) with 0.68 air change (N) rate defined in Table 4-4 and Table 4-5 with reference to California Department of Public Health (CDPH) *Standard Method for the Testing and Evaluation of Volatile Organic Chemical Emissions from Indoor Sources Using Environmental Chambers V 1.1* (2010).

TEST REPORT: 7191146830-CHM16-MA-CR1  
19 SEP 2016



PSB Singapore

## RESULTS

### 1. Emission Test Results

Table 1. Total Volatile Organic Compounds (TVOC) Emission Concentration Test Result

Sample	Test Result (After 168 hours)		Criteria for Singapore Green Building Council	Inferred Result
	Emission Rate	Concentration**		
Evo HERF (High End Resilient Floors)	0.14 mg/m <sup>2</sup> /h	0.07 mg/m <sup>3</sup>	≤ 0.1 mg/m <sup>3</sup> (4 Ticks)	Pass

\* TVOC is the sum of volatile organic compounds sampled on the sorbent tube between n-hexane (C6) and n-hexadecane (C16), and quantified by converting the total area of the chromatogram in that region to Toluene concentration equivalent.

\*\* Predicted exposure concentration based on usage area of 11.1 m<sup>2</sup> (A) for flooring/ceiling application.

Table 2. Formaldehyde Emission Concentration Test Result

Sample	Test Result (After 168 hours)		Criteria for Singapore Green Building Council	Inferred Result
	Emission Rate	Concentration**		
Evo HERF (High End Resilient Floors)	< 0.01 mg/m <sup>2</sup> /h	< 0.01 mg/m <sup>3</sup>	≤ 0.01 mg/m <sup>3</sup> (4 Ticks)	Pass

\*\* Predicted exposure concentration based on usage area of 11.1 m<sup>2</sup> (A) for flooring/ceiling application.

*li ana*

MS MARIANA AHMAD  
CHEMIST

*Xiao Zhou*


DR XIAO ZHOU  
PRODUCT MANAGER  
MICROCONTAMINATION DIAGNOSIS  
CHEMICAL & MATERIALS




# The Basic Certificates for Evo High End Resilient Flooring (Evo HERF)

Evo High End Resilient Flooring

**Evo HERF**<sup>TM</sup> EVORICH



**Test Results Against 4 Chemicals**



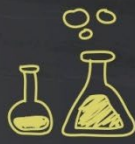
**01**

Total Volatile Organic Compounds (TVOC) Emission


Test Result (After 168 hours): **0.16 per sqm per hour**  
Criteria for Singapore Green Building Council: **0.25 mg per sqm per hour or less**  
Result: **PASS**

Formaldehyde Emission

Test Result (After 168 hours): **< 0.01 mg per sqm per hour**  
Criteria for Singapore Green Building Council: **0.02 mg per sqm per hour or less**  
Result: **PASS**



**02**



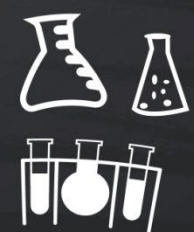
**03**

Phenylcyclohexene Emission

Test Result (After 168 hours): **< 0.002 mg/sqm per hour**  
Criteria for Singapore Green Building Council: **0.0065 mg per sqm per hour or less**  
Result: **PASS**

Total Phthalates Emission

Test Result (After 168 hours): **< 0.005 mg per cum per hour**  
Criteria for Singapore Green Building Council: **< 0.01 mg per cubic metre**  
Result: **PASS**



**04**

[www.evorich.com.sg](http://www.evorich.com.sg)

## SINGAPORE GREEN BUILDING PRODUCT CERTIFICATE

AWARDED TO

**Evorich Holdings Pte Ltd**

16 Tampines Street 92 (Behind Tampines SAFRA)  
Singapore 528873

FOR THE PRODUCT

**Floor Finishes - Vinyl**

PRODUCT BRAND

**EVORICH**

PRODUCT MODEL

**High End Resilient Flooring (HERF)**

THE PRODUCT HAS BEEN ASSESSED ACCORDING TO THE ASSESSMENT CRITERIA OF SINGAPORE GREEN BUILDING PRODUCT CERTIFICATION SCHEME. IT HAS BEEN AWARDED THE RATING:

Director  
SGBC Pte Ltd

Certificate Number	Original Issue Date	Revised Date	Valid Till
SGBP 3748	12 December 2022	-	11 December 2024

✓Good    ✓✓Very Good    ✓✓✓Excellent    ✓✓✓✓Leader

The use and reliance on this certificate is subject to the terms and conditions of the Singapore Green Building Product Certification Scheme. Revised certificates may also be issued at the discretion of the Council. The certification status may be verified at the Singapore Green Building Council website ([www.sgbc.sg](http://www.sgbc.sg)).

© 2016

[www.evorich.com.sg](http://www.evorich.com.sg)

[www.facebook.com/evorichflooring](https://www.facebook.com/evorichflooring)

[www.pinterest.com/evorichflooring/](https://www.pinterest.com/evorichflooring/)

[www.instagram.com/evorichflooring](https://www.instagram.com/evorichflooring)

[biz@evorich.com.sg](mailto:biz@evorich.com.sg)

33 of 40

# The Basic Certificates for Evo High End Resilient Flooring (Evo HERF)

## TEST REPORT: 7191092331-CHM14-TSL-CR1

Date: 18 JUL 2014 Tel: +65 68851312 Fax: +65 67784301  
Client's Ref: Email: zhou.xiao@tuv-sud-psb.sg

Note: This report is issued subject to the Testing and Certification Regulations of the TÜV SÜD Group and the General Terms and Conditions of Business of TÜV SÜD PSB Pte Ltd. In addition, this report is governed by the terms set out within this report.



### SUBJECT

Evaluation of Toxic Fumes Generated From Material Sample During Burning

### CLIENT

Evorich Holdings Pte Ltd  
21 Kim Chuan Terrace  
Singapore 537042

Attn: Mr Raymond Foo

### SAMPLE SUBMISSION DATE

04 Jul 2014

### DESCRIPTION OF SAMPLE

A piece of material sample labelled as follows was received.

Sample Information		Figure of Sample
Brand & Model Reference :	(HERF) High End Resilient Floor	
Generic Product Name :	Click Vinyl Plank	
Nominal Thickness :	5.0 mm	
Density :	1947 kg/m <sup>3</sup>	

### DATE OF ANALYSIS

07 Jul 2014 – 18 Jul 2014

### Amendments:

The following amendment was made on 18 Sep 2014:

The Sample Information under "DESCRIPTION OF SAMPLE" and "RESULTS" were amended as requested.



Laboratory:  
TÜV SÜD PSB Pte Ltd.  
No.1 Science Park Drive  
Singapore 118221

Phone : +65-6885 1333  
Fax : +65-6776 8670  
E-mail: testing@tuv-sud-psb.sg  
www.tuv-sud-psb.sg  
Co. Reg : 199002667R

Regional Head Office:  
TÜV SÜD Asia Pacific Pte. Ltd.  
3 Science Park Drive, #04-01/05  
The Franklin, Singapore 118223  
TUV®

Page 1 of 4

## TEST REPORT: 7191092331-CHM14-TSL-CR1 18 JUL 2014



### RESULTS

Table 1: The Toxic Fumes Results For "Click Vinyl Plank" Sample

Toxic Fumes Generated	"Click Vinyl Plank" (mg/m <sup>3</sup> of Fire Effluents)	IDLH Values Limits <sup>a</sup> (mg/m <sup>3</sup> )
1. Carbon Dioxide, Average (Carbon Dioxide, maximum)	697 1073	73000 -
2. Carbon Monoxide, Average (Carbon Monoxide, maximum)	<200 <200	1400 -
3. Hydrogen Fluoride, HF	<5	25
4. Hydrogen Chloride, HCl	<5	76
5. Hydrogen Bromide, HBr	<5	101
6. Sulfur Dioxide, SO <sub>2</sub> <sup>b</sup>	<5	270
7. Nitrogen Dioxide, NO <sub>2</sub> <sup>c</sup>	<5	38
8. Hydrogen Cyanide, HCN	<5	56

<sup>a</sup> The values in Table 1 are the IDLH values of the listed gases (the concentration of the gas in the atmosphere which for an exposure time of 30mins is immediately Dangerous to Life or Health) given in the NIOSH Guide [1].

<sup>b</sup> Sulfur Dioxide includes Sulfur trioxide expressed as sulfur dioxide

<sup>c</sup> Nitrogen dioxide includes nitric oxide expressed as nitrogen dioxide

- The above results from the analysis of the toxic fumes generated from the specimen were found to be below the IDLH Value of listed gases.
- The weighted summation index, R, is less than 0.3.

### Remarks

The weighted summation index R for the sample tested was found to be within the requirement of 1.0 max when tested and assessed according to NF X 70-100 with R calculated in accordance with Annex B of BS 6853:1999.

MS TAN SER LING  
TECHNICAL EXECUTIVE

DR XIAO ZHOU  
PRODUCT MANAGER  
MICROCONTAMINATION DIAGNOSIS  
CHEMICAL & MATERIALS

Page 3 of 4

© 2016



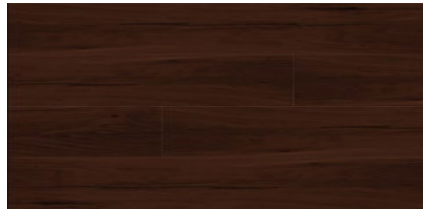


# Evorich Evo High End Resilient Flooring (Evo HERF) Collection

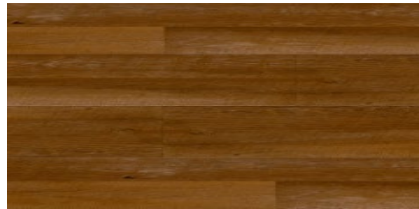
Dimension: 190mm x 1210mm | Thickness: 5.0mm | Wear Layer: 0.5mm



546128 Aspen Oak Black



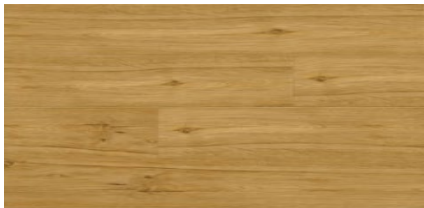
72516 Kentucky Oak



66314 Natural Hickory



01114B Greenwich Tan



725110 Markham Oak Light



72513 Markham Oak Medium



63696 Durban Oak



01112B Pearl Oak



978104 Amsterdam Eggshell



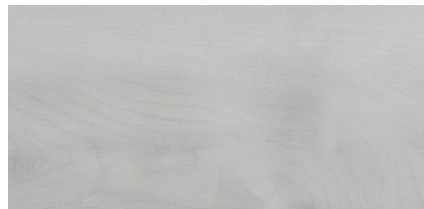
978109 Amsterdam Silver



978103 Amsterdam Light Tan



01993 Glacial Pine



35313 Scandic Snow Wash

## Wide Plank Series™



**DROPLOCK**  
100



**Evorich Flooring**

"the leader in eco floors"

\*Colors Subjected to Availability

\* Tiles series on indent basis

HIGH END RESILIENT FLOOR™  
**HERF™  
HERRINGBONE**  
DESIGNED BY EVORICH IN SINGAPORE

Redefine the way you enjoy Vintage Classical  
Herringbone Wooden Floors.

Looks Woody, Feels Woody but NO ELEMENT OF WOOD!

100% WATERPROOF AND TERMITE PROOF!

High Class Wood Flooring Made WALLET-Friendly!



**EVORICH**



**HERF™  
HERRINGBONE**

DESIGNED BY EVORICH  
**IN SINGAPORE**

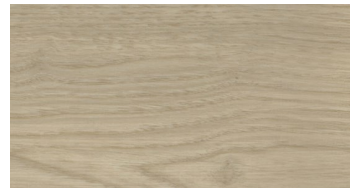


**EVORICH**



**HERF Herringbone** offers the versatility and natural look of the best-selling Evo High End Resilient Flooring (Evo HERF) as well as Easy CLIC System technology.

Easy Click System adds the popular CLIC-Locking technology, providing the benefits of simple, no-glue installation, plus maximum water resistance.



**HERF Herringbone**  
Mocha Oak  
978121



**HERF Herringbone**  
Matured Oak  
978122



**HERF Herringbone**  
Oak Light Tan  
978123



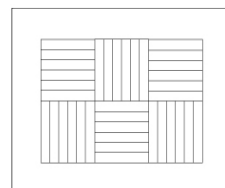
**HERF Herringbone**  
Oak Brown  
978124



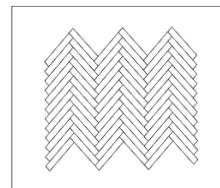
**Glacial Marble**



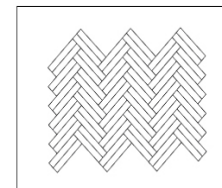
**Calutta Marble**



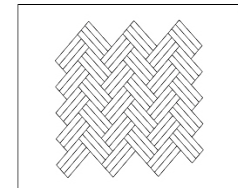
**Checker Block**



**Single Herringbone**



**Double Herringbone**



**Triple Herringbone**



# Evo HERF<sup>®</sup>

## GIGANTIC STONE SERIES

DESIGNED BY EVORICH<sup>®</sup> IN SINGAPORE



# Evo HERF<sup>®</sup>

## GRAND

MARBLE SERIES

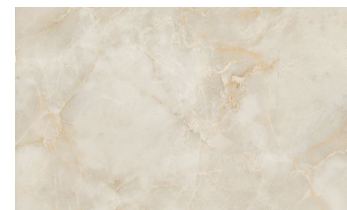
DESIGNED BY EVORICH<sup>®</sup> IN SINGAPORE



76402 Stone Gray



T18202 Valencia Stone



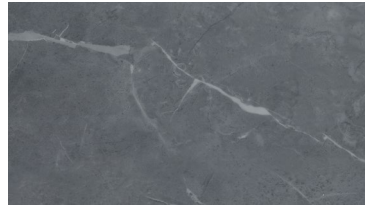
Crema Mocha



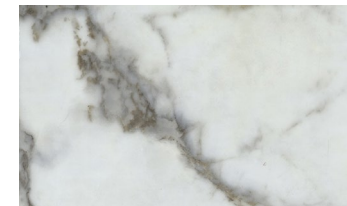
Black Marlin



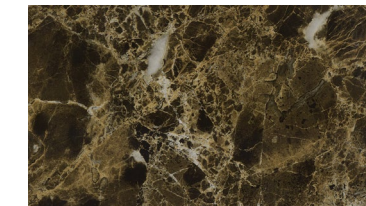
76375 Concrete Gray



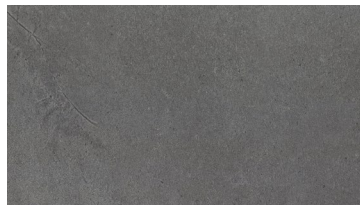
T18204 Milan Gray Stone



Pearl White Marble



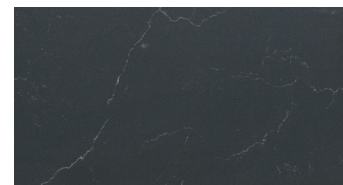
Mission Black



76376 Charcoal Gray



T18205 Graphite Stone



Glacial Marble



Calutta Marble

# Did You Know?



EVORICH is the first flooring company to introduce High End Resilient Flooring (HERF) into the Singapore market.

## Evo HERF



"High End Resilient Flooring (HERF)" was named by EVORICH because of its high-end quality features compared to traditional vinyl and laminated floors.

## EVORICH FACTS



To ensure a Lifetime Residential Limited Warranty for your HERF, it must be verified that your HERF was installed by certified installers bearing the Flooring Company's Work Permit.



EVORICH Manufacturing Pte Ltd is the only flooring company that is Casetrust Accredited. This reflects our commitment towards fair-trading by establishing consumer-friendly policies, ethical advertising, and proper dispute resolution procedures.



# EVORICH Cares for YOU!

## High End Resilient Flooring (HERF)

### How to spot an authentic HERF?



*A revolutionary flooring that is customised to your lifestyle needs...*

- . 100% waterproof
- . 100% odourless flooring
- . made with pure virgin vinyl
- . termite-free flooring
- . patented click-locking system
- . simple and glue-less installation

#### Homeowners who have

floored with 'counterfeit' HERF enjoy NO "right" to warranty for the product.



#### Remember

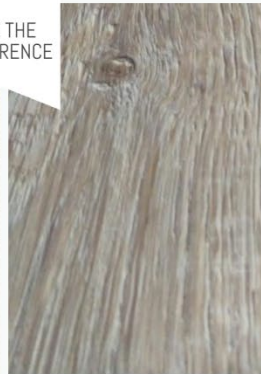
ONLY authentic High End Resilient Flooring (HERF) has the Ceramic Bead Technology with the "shimmering" dots coatings for enhanced wear resistance and improved durability.

Spot the shimmering dots to know it's real HERF



Authentic Evorich HERF Flooring

SEE THE DIFFERENCE



'Other' Vinyl Flooring

Be assured that you have been floored with an authentic HERF!



Drop by our showrooms for a real look and feel of an authentic HERF

EVORICH R & D Building and Gallery:  
16 Tampines Street 92 Singapore 528873  
(Behind Tampines SAFRA)



Transact with Evorich OFFICIAL flooring specialists



Verify with us if your ID is a registered flooring partner of Evorich.

Email us:  
marketing@evorich.com.sg



Follow us on our official social media accounts to be aware of the latest news and announcements



Register with our online warranty system



#### Benefits of Having an Authentic HERF



True value for its high performance quality and durability.



True protection for all family members.



True protection that comes with genuine HERF Warranty.



True test reports and certificates that ensure product integrity.





## CUSTOMER'S TESTIMONIAL

It has been almost two years since we installed Evorich's HERF flooring and I am really glad that we chose Evorich! The flooring is durable, both child and senior friendly (anti-slipped), and is very easy to maintain clean.

Friends and colleagues who visit for the first time often mistook our house for premium BTOs. It is very recommended to install Evorich's HERF!

- Sean Seah

“We would like to thank Sebastian and his team from Evorich Flooring for the efficient, delicate work as well as exceptional customer service. We are glad and satisfied that we have engaged with Sebastian. Thank you Evorich for providing an excellent flooring which plays a major role in our home!”

EVORICH



## EVORICH Customers' Testimonials



Evo High End Resilient Flooring (Evo HERF)  
Amsterdam Light Tan Design

## EVORICH Customers' Testimonials



Evo High End  
Resilient Flooring  
(Evo HERF)  
Amsterdam Eggshell Design

*"Just done up my 4-room house. Thumbs up to EVORICH. I myself was quite amazed with the product and workmanship."*

*"It was a resale unit, but when I decided to change the flooring, the whole interior also changed."*

Dennis Thien  
Boon Bing & Wife  
@ Eunos Road



## EVORICH Customers' Testimonials

“First of all, I would like to say a million thanks to EVORICH Flooring's workers for a job well done & being accommodating to my fussiness. Nice finishes. We are very happy with the outcome.”



Evo High End Resilient Flooring (Evo HERF)  
Aspen Oak Black Design





## EVORICH R & D Building and FLAGSHIP Gallery

-----  
16 Tampines Street 92  
Singapore 528873  
(Behind Tampines SAFRA)



## EVORICH Concept Sales Gallery

-----  
1 Tampines North Drive 1, #02-38  
T-Space EVORICH Block, Singapore  
528559  
(In between IKEA, Giant &  
Courts)



## EVORICH Floors . Decks . Walls Academy

-----  
27 Kim Chuan Terrace  
Singapore 537045



## EVORICH Regional Materials Centre

-----  
5 Kaki Bukit Rd 2, Singapore  
417839



Represented Singapore in  
ASEAN-Japan Young  
Entrepreneurs Forum



Member  
**National  
Wood Flooring  
Association**

@evorichflooring



Evorich Manufacturing Pte Ltd



EYA-Established Entrepreneur 2016



EVORICH on SOE Board of  
Governors & 2011  
Honoree



Building and Construction  
Authority  
Registered Contractor



Singapore Manufacturing  
Federation  
新加坡製造商總會



Winner, SPBA - Established Brands



PROMISING FRANCHISOR  
OF THE YEAR  
WINNER



Hotline: +65 6348 7333 (16 Lines) | +65 8795 2118 WhatsApp  
| www.EVORICH.com.sg | email: biz@evorich.com.sg